

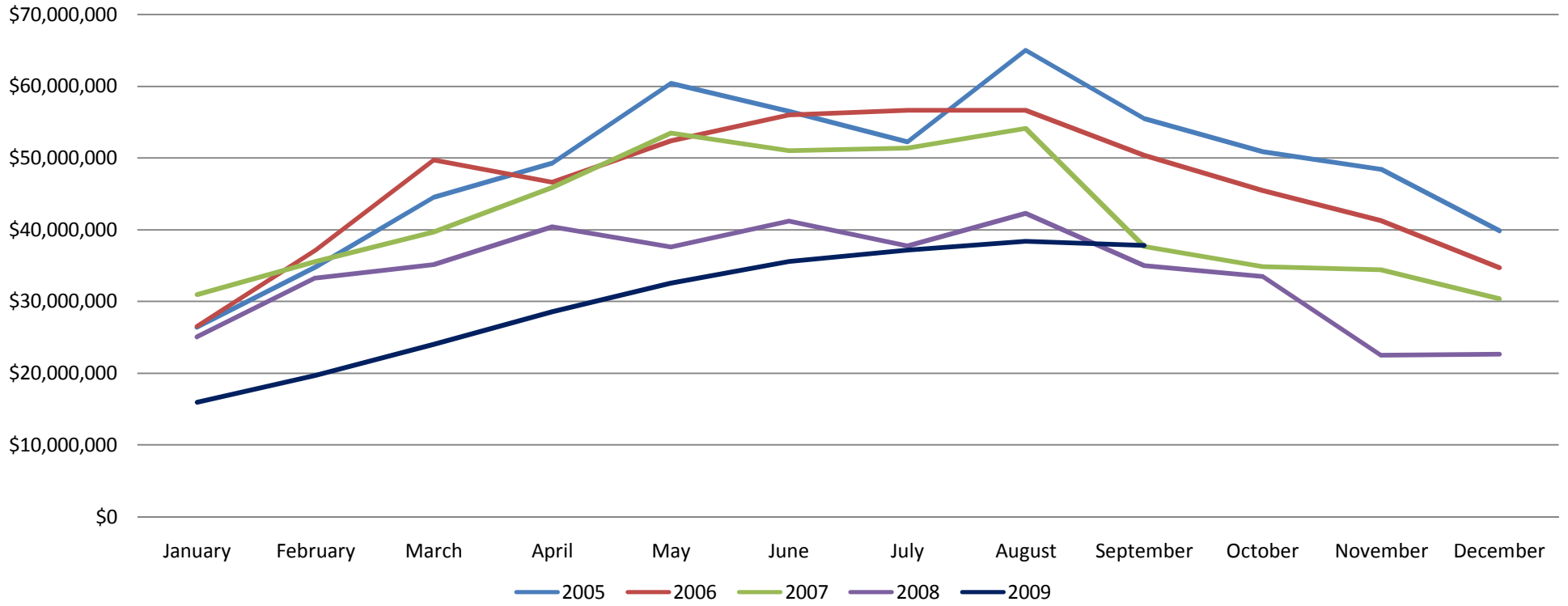
All Areas

WRIST Inc. Housing Statistics

Total Sold Volume By Month

	January	February	March	April	May	June	July	August	September	October	November	December
2005	\$26,427,939	\$34,805,019	\$44,494,624	\$49,302,674	\$60,398,387	\$56,467,453	\$52,207,305	\$65,004,636	\$55,460,934	\$50,863,016	\$48,440,093	\$39,866,891
2006	\$26,560,285	\$37,188,916	\$49,725,330	\$46,585,617	\$52,356,031	\$55,943,723	\$56,618,100	\$56,606,009	\$50,360,147	\$45,477,749	\$41,291,601	\$34,727,177
2007	\$30,965,307	\$35,571,180	\$39,671,504	\$45,871,299	\$53,479,152	\$51,018,755	\$51,410,434	\$54,147,749	\$37,684,169	\$34,825,722	\$34,382,722	\$30,357,132
2008	\$25,020,316	\$33,238,355	\$35,140,470	\$40,406,114	\$37,540,676	\$41,186,179	\$37,710,025	\$42,259,809	\$34,972,236	\$33,468,397	\$22,500,108	\$22,656,365
2009	\$15,925,977	\$19,711,885	\$24,017,994	\$28,541,599	\$32,543,189	\$35,559,752	\$37,204,138	\$38,398,823	\$37,829,891			

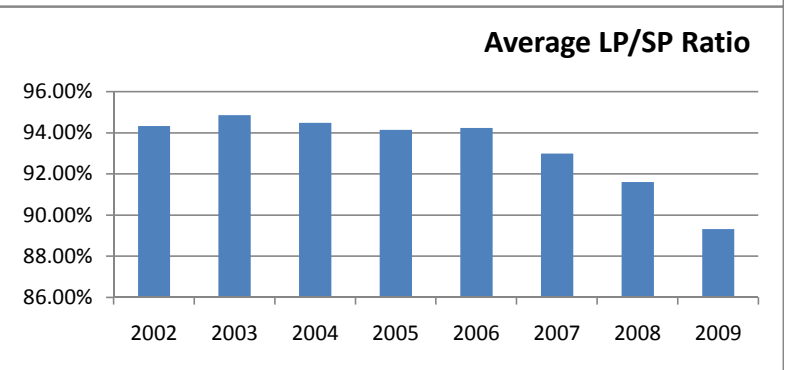
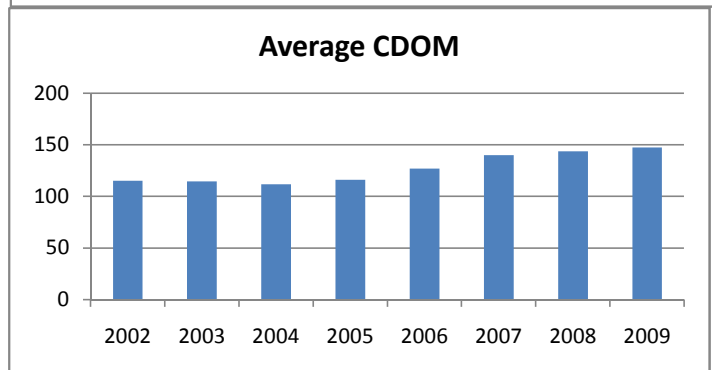
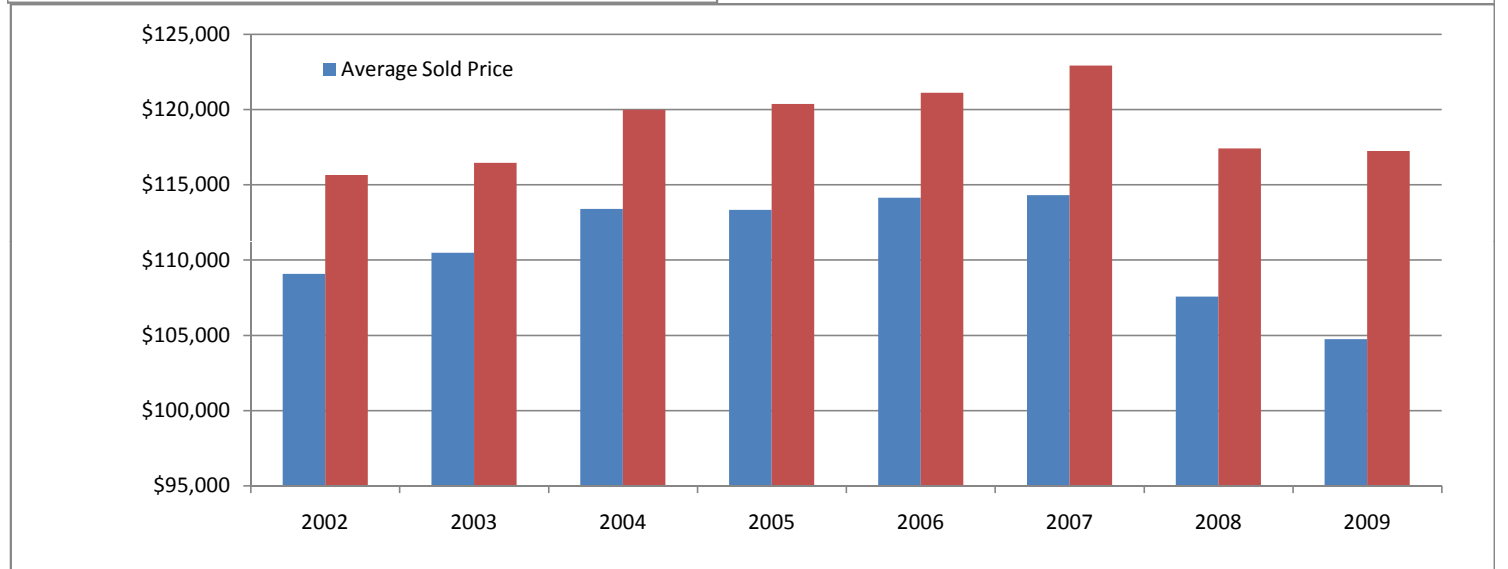
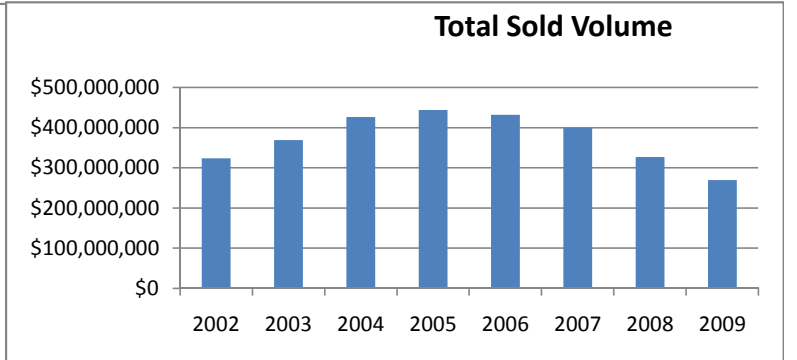
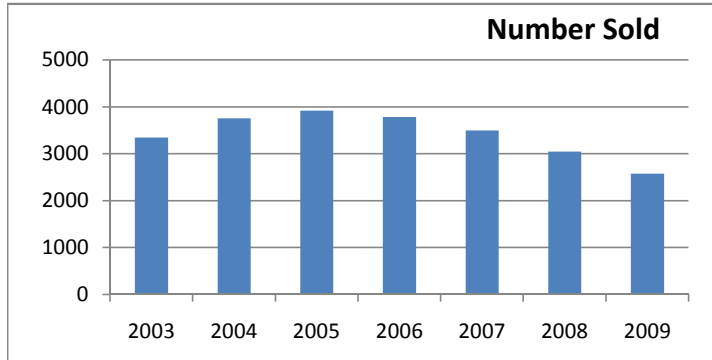
Total Sold Volume By Month



All Areas

WRIST Inc. Housing Statistics (All Areas)

	2002	2003	2004	2005	2006	2007	2008	2009
Number Sold	2967	3346	3760	3922	3784	3497	3044	2575
Average Sold Price	\$109,105	\$110,504	\$113,407	\$113,353	\$114,150	\$114,332	\$107,580	\$104,751
Total Sold Volume	\$323,714,449	\$369,744,801	\$426,409,321	\$444,568,971	\$431,944,158	\$399,819,549	\$327,474,180	\$269,733,248
Average CDOM	115	114	112	116	127	140	144	148
Average Original LP	\$115,664	\$116,484	\$120,009	\$120,391	\$121,129	\$122,938	\$117,434	\$117,271
Average LP/SP Ratio	94.33%	94.87%	94.50%	94.15%	94.24%	93.00%	91.61%	89.32%

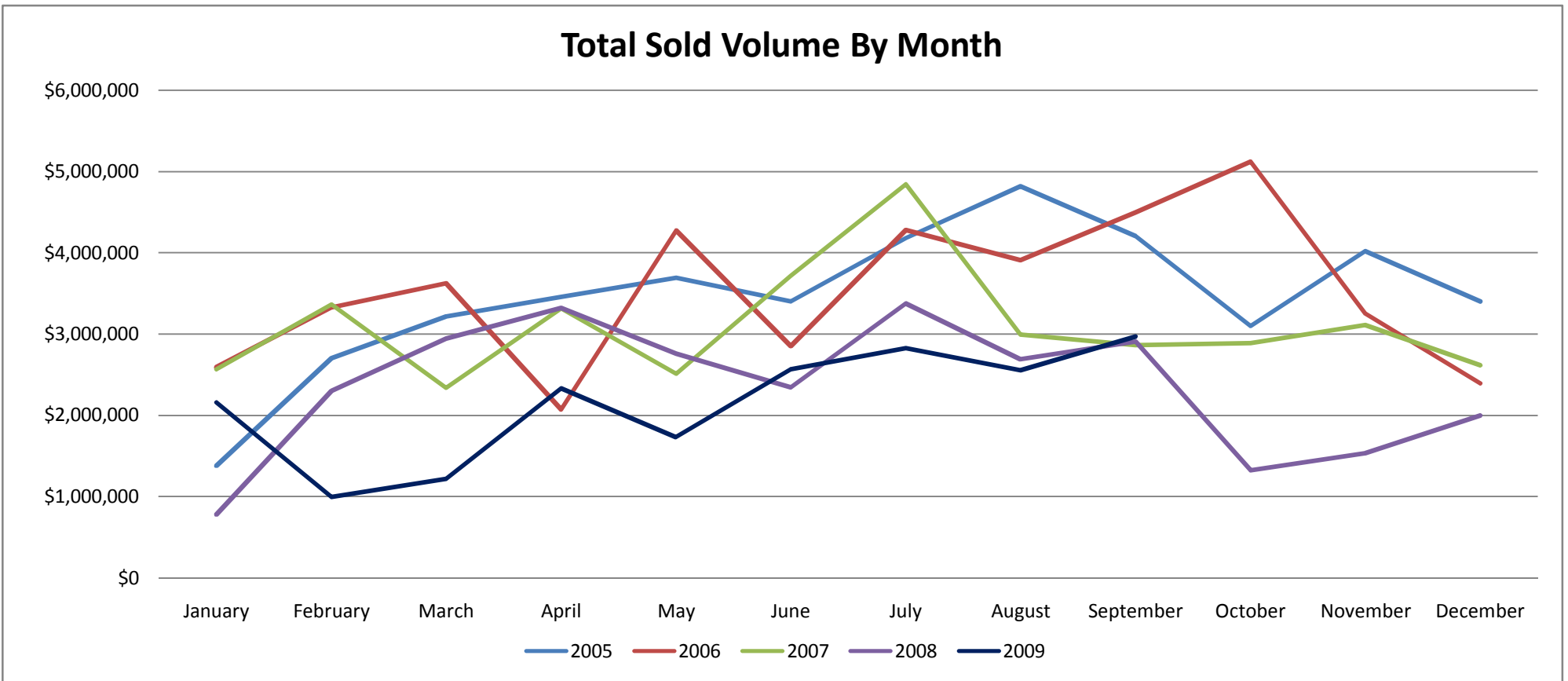


Auglaize County

WRIST Inc. Housing Statistics

Total Sold Volume By Month

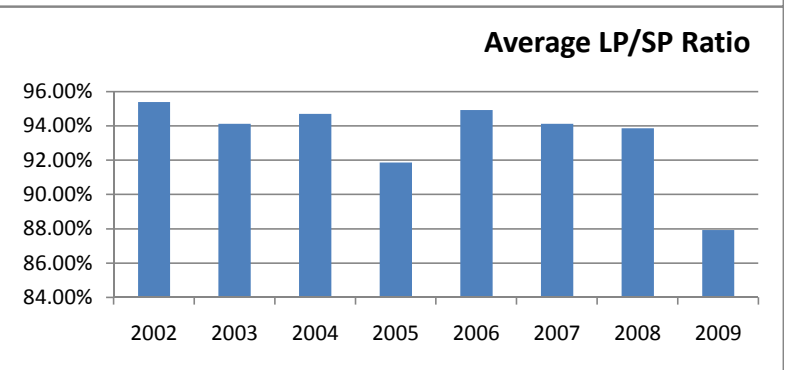
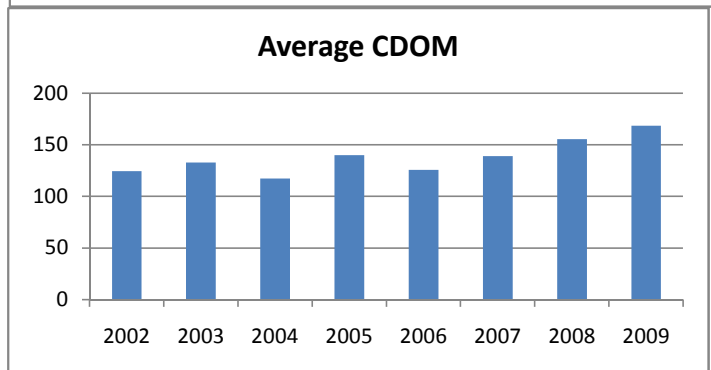
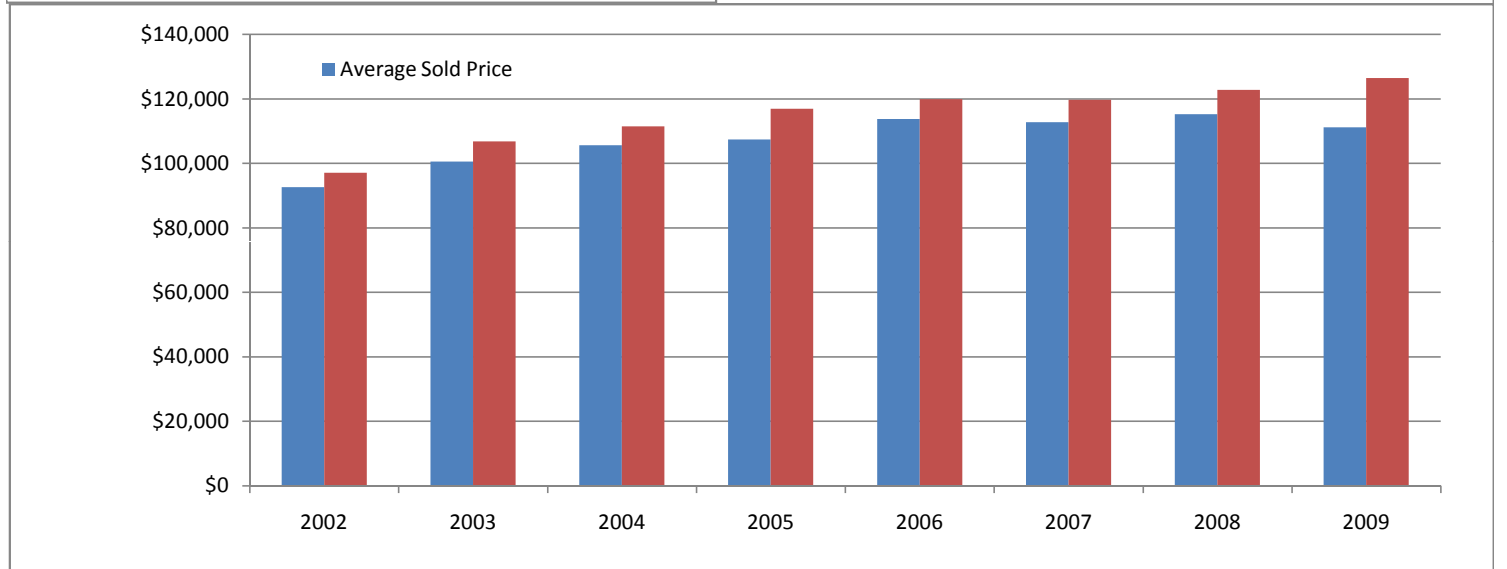
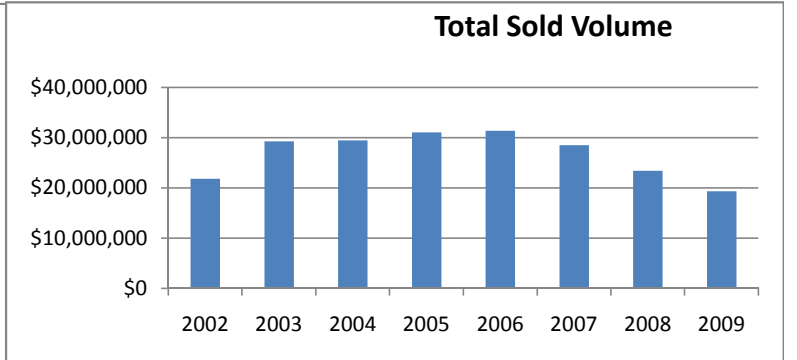
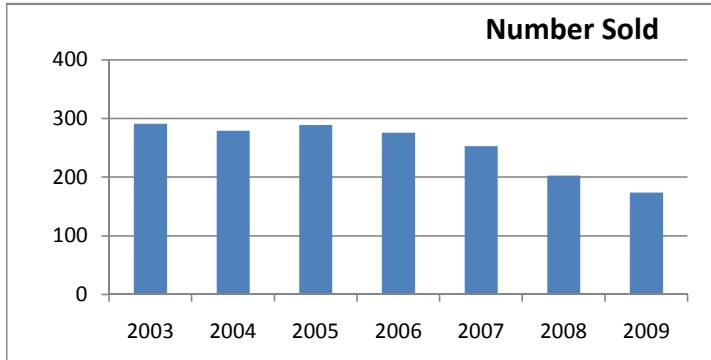
	January	February	March	April	May	June	July	August	September	October	November	December
2005	\$1,379,860	\$2,700,651	\$3,217,015	\$3,458,202	\$3,691,000	\$3,401,650	\$4,179,500	\$4,817,550	\$4,207,825	\$3,095,800	\$4,021,106	\$3,404,250
2006	\$2,590,922	\$3,329,550	\$3,622,875	\$2,072,500	\$4,271,883	\$2,850,175	\$4,280,890	\$3,908,920	\$4,491,594	\$5,118,715	\$3,249,800	\$2,394,450
2007	\$2,572,033	\$3,368,250	\$2,340,700	\$3,314,972	\$2,513,650	\$3,719,600	\$4,845,150	\$2,995,035	\$2,863,550	\$2,891,400	\$3,113,541	\$2,616,730
2008	\$777,400	\$2,300,600	\$2,942,900	\$3,318,540	\$2,756,985	\$2,340,445	\$3,376,300	\$2,687,149	\$2,907,945	\$1,324,800	\$1,530,550	\$1,993,400
2009	\$2,156,800	\$993,350	\$1,218,350	\$2,334,400	\$1,731,900	\$2,565,750	\$2,828,050	\$2,552,500	\$2,969,450			



Auglaize County

WRIST Inc. Housing Statistics (All Areas)

	2002	2003	2004	2005	2006	2007	2008	2009
Number Sold	236	291	279	289	276	253	203	174
Average Sold Price	\$92,691	\$100,582	\$105,623	\$107,451	\$113,838	\$112,778	\$115,312	\$111,210
Total Sold Volume	\$21,875,140	\$29,269,335	\$29,468,804	\$31,053,253	\$31,419,309	\$28,532,940	\$23,408,264	\$19,350,550
Average CDOM	125	133	118	140	126	139	155	169
Average Original LP	\$97,157	\$106,855	\$111,517	\$116,963	\$119,911	\$119,807	\$122,831	\$126,470
Average LP/SP Ratio	95.40%	94.13%	94.71%	91.87%	94.94%	94.13%	93.88%	87.93%

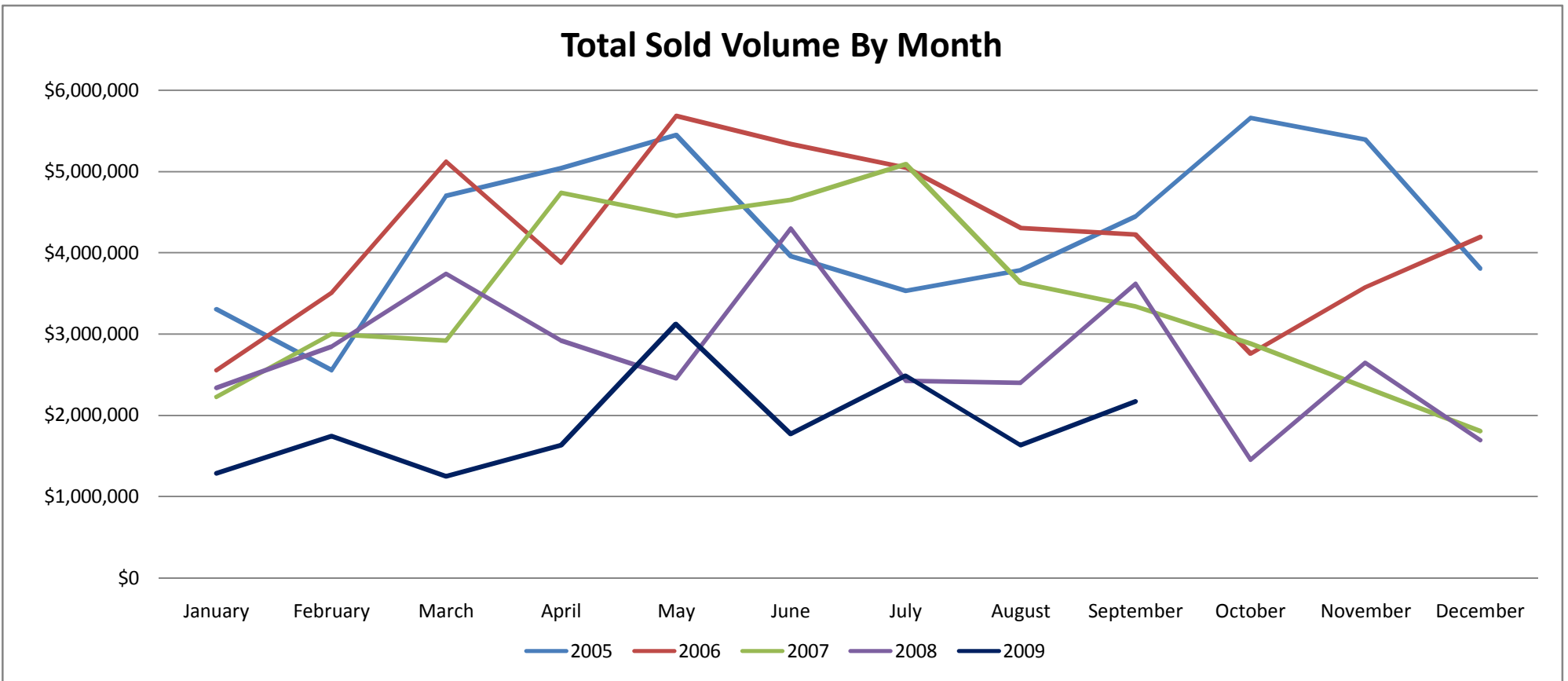


Champaign County

WRIST Inc. Housing Statistics

Total Sold Volume By Month

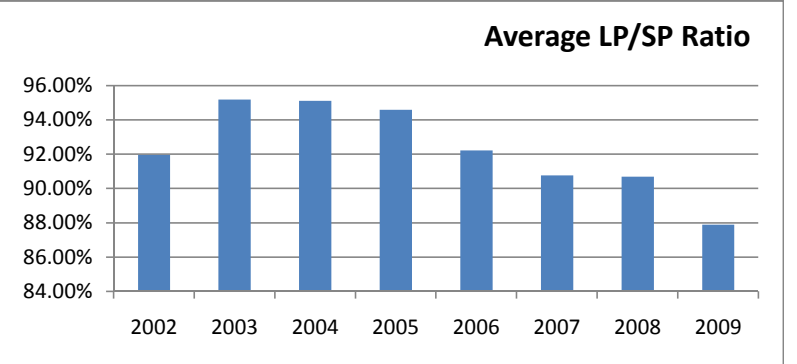
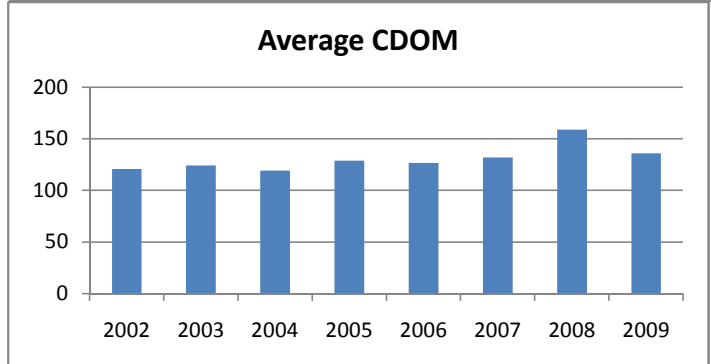
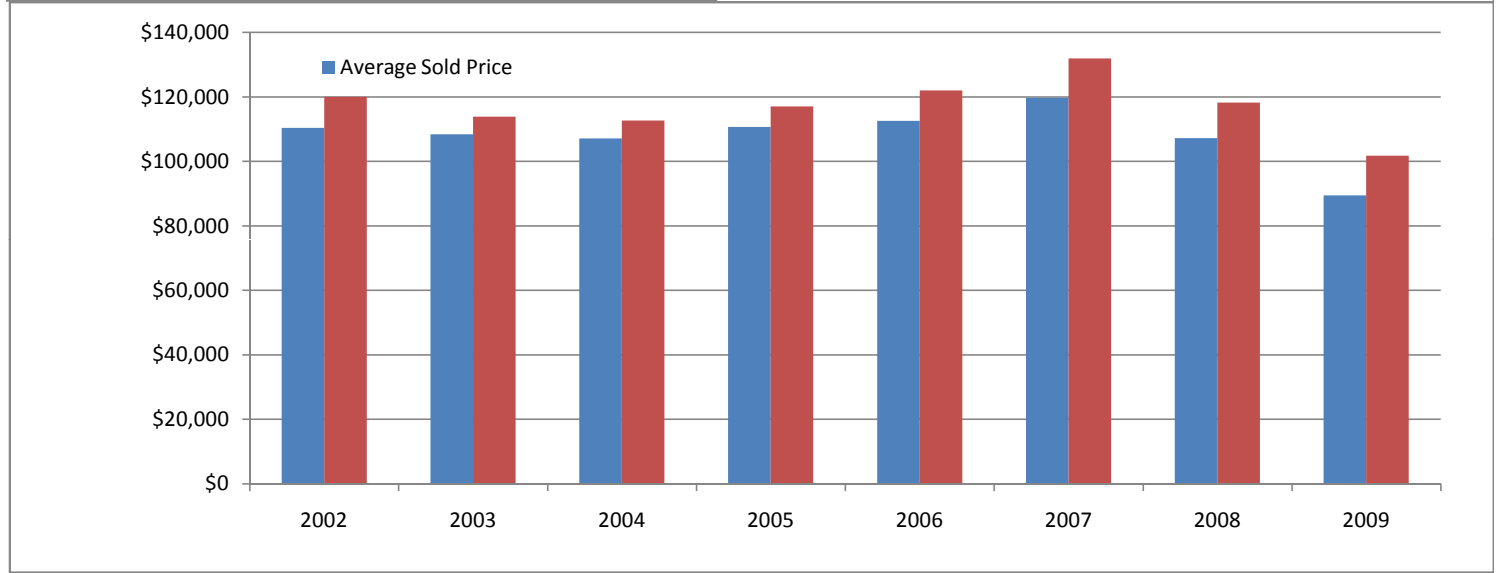
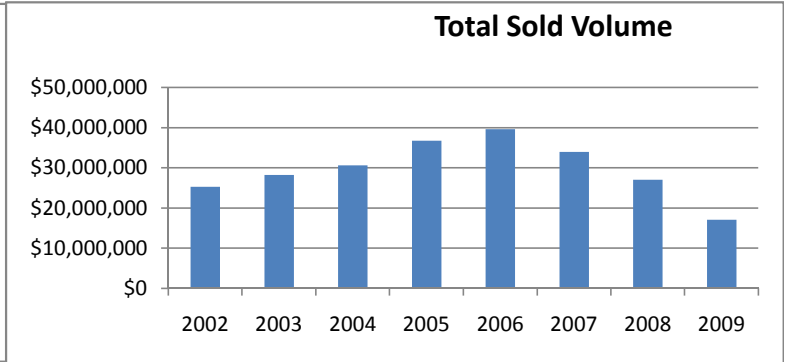
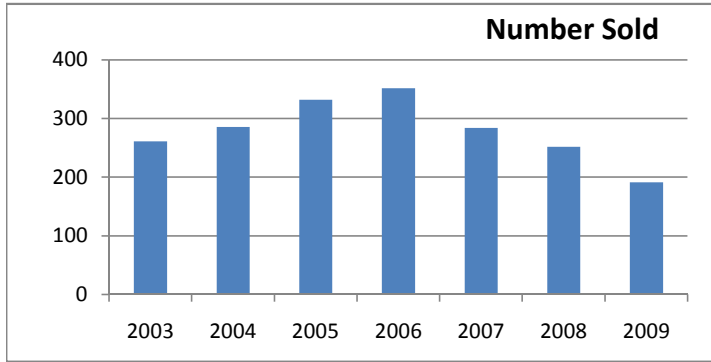
	January	February	March	April	May	June	July	August	September	October	November	December
2005	\$3,306,100	\$2,555,414	\$4,702,152	\$5,043,100	\$5,448,680	\$3,959,701	\$3,530,452	\$3,784,800	\$4,445,797	\$5,661,350	\$5,394,150	\$3,806,610
2006	\$2,552,250	\$3,504,725	\$5,120,684	\$3,874,166	\$5,680,446	\$5,333,560	\$5,045,885	\$4,300,300	\$4,219,845	\$2,758,685	\$3,569,303	\$4,192,818
2007	\$2,225,850	\$2,996,800	\$2,916,394	\$4,733,000	\$4,450,156	\$4,646,530	\$5,086,710	\$3,630,412	\$3,335,485	\$2,881,004	\$2,346,800	\$1,806,550
2008	\$2,339,500	\$2,842,502	\$3,743,000	\$2,917,255	\$2,455,900	\$4,297,118	\$2,422,300	\$2,400,950	\$3,614,710	\$1,454,800	\$2,645,550	\$1,694,440
2009	\$1,289,065	\$1,743,132	\$1,251,850	\$1,631,690	\$3,121,761	\$1,768,820	\$2,485,200	\$1,632,300	\$2,171,503			



Champaign County

WRIST Inc. Housing Statistics (All Areas)

	2002	2003	2004	2005	2006	2007	2008	2009
Number Sold	229	261	286	332	352	284	252	191
Average Sold Price	\$110,444	\$108,437	\$107,196	\$110,772	\$112,591	\$119,793	\$107,275	\$89,504
Total Sold Volume	\$25,291,582	\$28,302,056	\$30,658,029	\$36,776,196	\$39,631,861	\$34,021,337	\$27,033,235	\$17,095,321
Average CDOM	121	124	119	129	127	132	159	136
Average Original LP	\$120,091	\$113,898	\$112,684	\$117,096	\$122,072	\$131,972	\$118,276	\$101,820
Average LP/SP Ratio	91.97%	95.21%	95.13%	94.60%	92.23%	90.77%	90.70%	87.90%



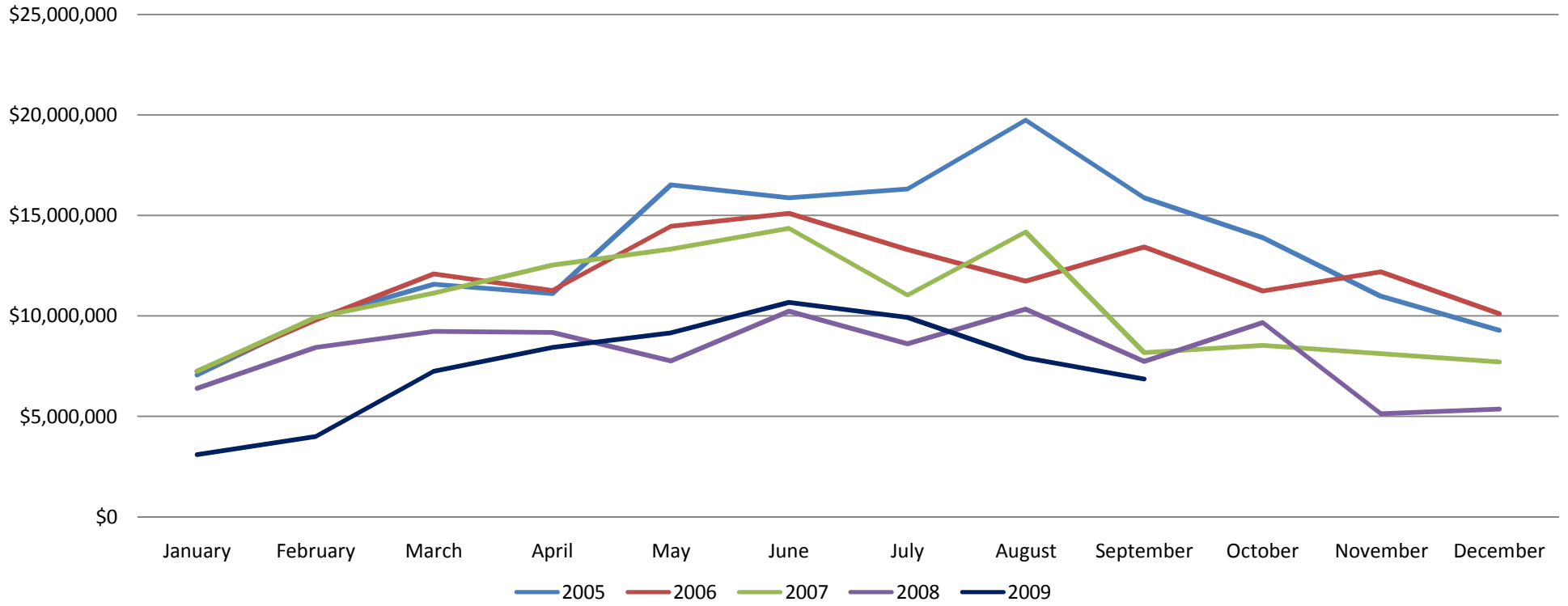
Clark County

WRIST Inc. Housing Statistics

Total Sold Volume By Month

	January	February	March	April	May	June	July	August	September	October	November	December
2005	\$7,060,673	\$9,883,792	\$11,570,404	\$11,099,690	\$16,509,169	\$15,873,253	\$16,314,497	\$19,743,870	\$15,889,924	\$13,895,591	\$10,973,217	\$9,285,701
2006	\$7,229,029	\$9,789,751	\$12,084,237	\$11,250,362	\$14,458,629	\$15,106,813	\$13,292,176	\$11,735,022	\$13,419,203	\$11,242,952	\$12,200,048	\$10,091,811
2007	\$7,230,901	\$9,912,430	\$11,129,065	\$12,518,080	\$13,332,485	\$14,353,500	\$11,015,650	\$14,182,077	\$8,156,998	\$8,533,076	\$8,106,460	\$7,683,657
2008	\$6,389,750	\$8,422,965	\$9,237,102	\$9,181,050	\$7,761,445	\$10,228,162	\$8,619,140	\$10,343,342	\$7,728,380	\$9,675,404	\$5,115,405	\$5,359,715
2009	\$3,100,500	\$3,997,463	\$7,234,401	\$8,424,990	\$9,141,736	\$10,659,957	\$9,915,914	\$7,902,496	\$6,856,300			

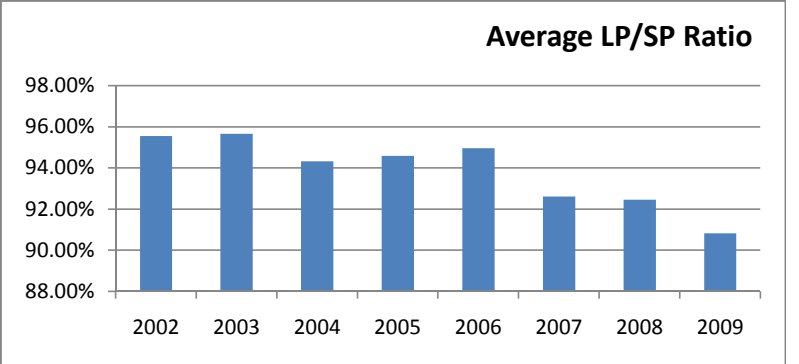
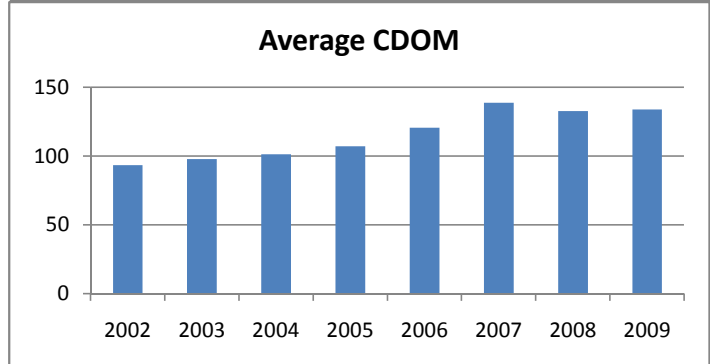
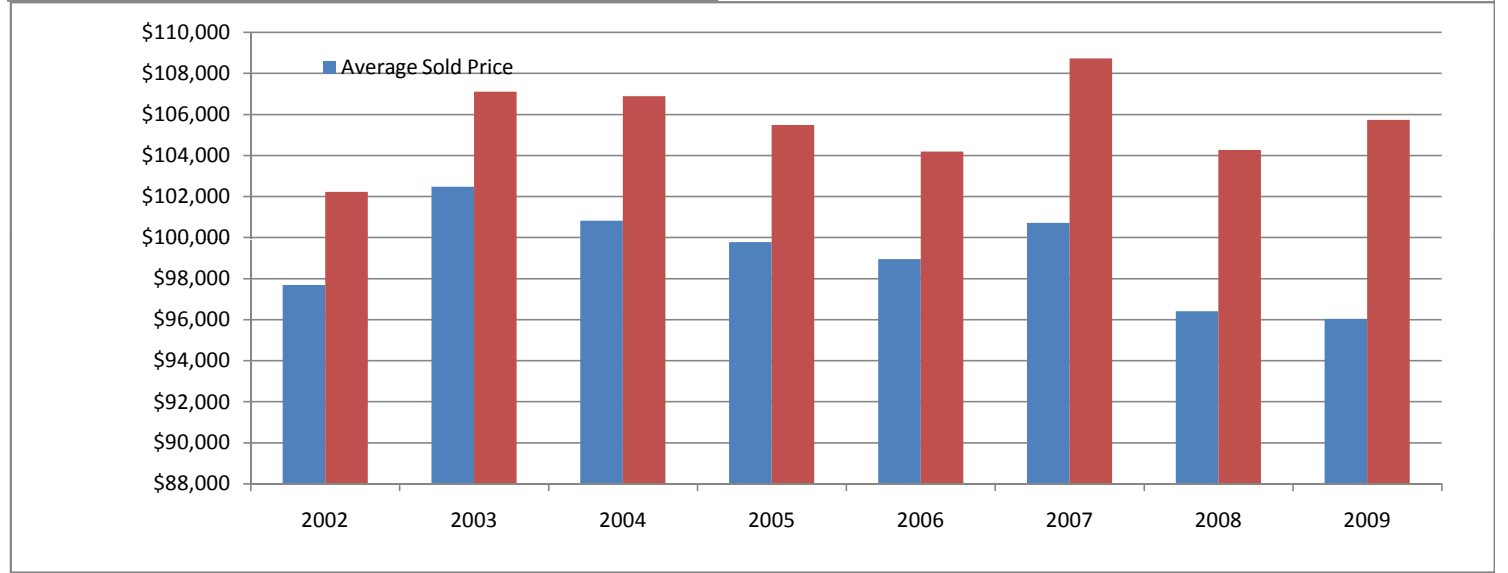
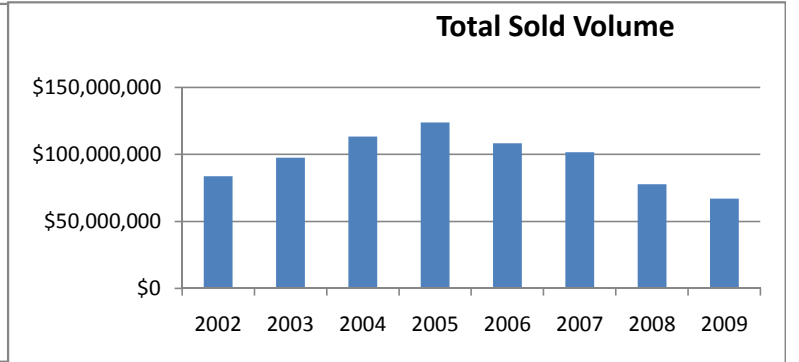
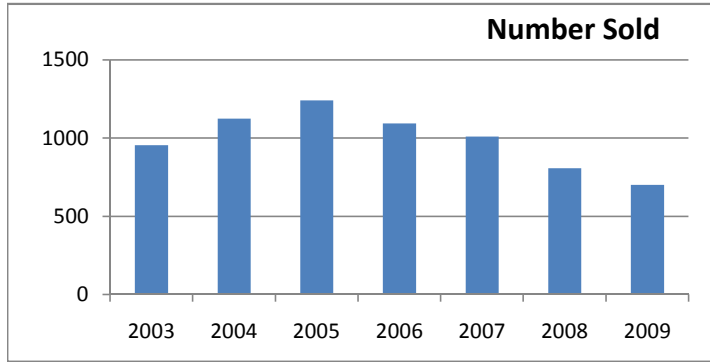
Total Sold Volume By Month



Clark County

WRIST Inc. Housing Statistics (All Areas)

	2002	2003	2004	2005	2006	2007	2008	2009
Number Sold	858	954	1126	1242	1095	1011	808	700
Average Sold Price	\$97,701	\$102,477	\$100,838	\$99,795	\$98,964	\$100,723	\$96,425	\$96,048
Total Sold Volume	\$83,827,452	\$97,763,104	\$113,543,240	\$123,945,272	\$108,365,222	\$101,831,186	\$77,911,336	\$67,233,757
Average CDOM	93	98	101	107	121	139	133	134
Average Original LP	\$102,235	\$107,118	\$106,891	\$105,500	\$104,207	\$108,743	\$104,281	\$105,747
Average LP/SP Ratio	95.57%	95.67%	94.34%	94.59%	94.97%	92.62%	92.47%	90.83%



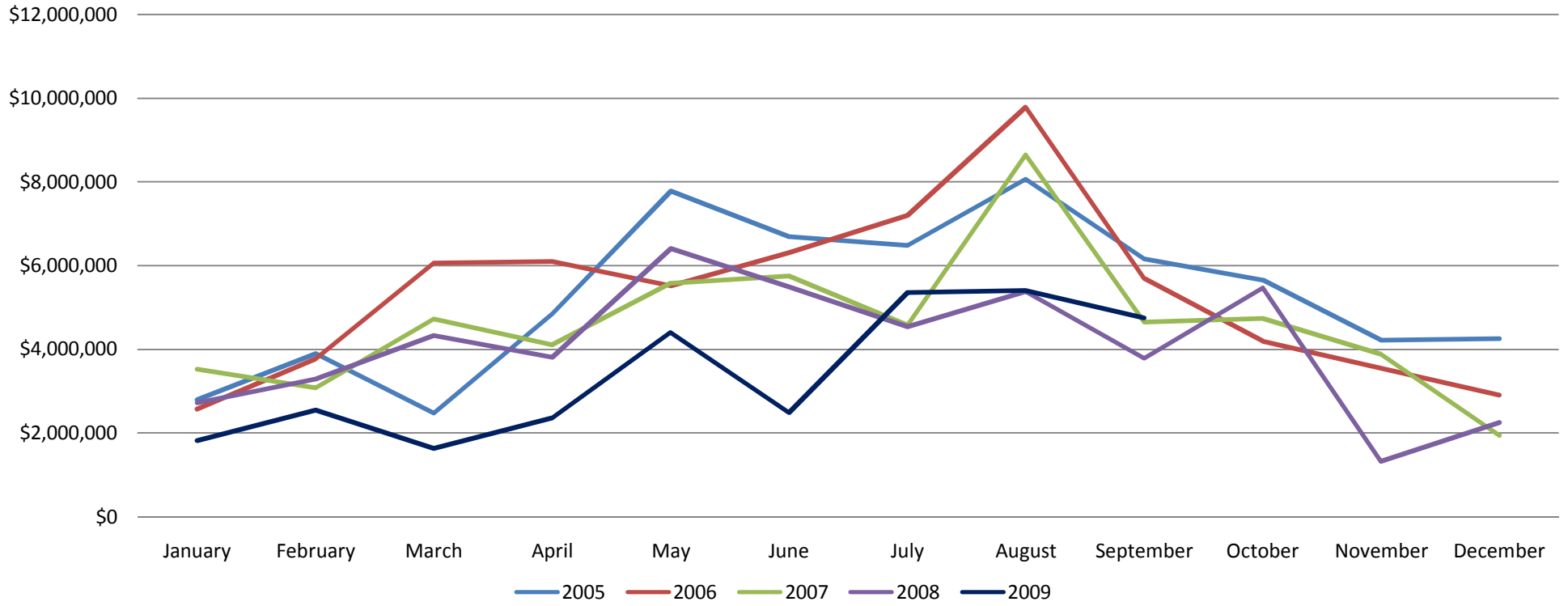
Logan County

WRIST Inc. Housing Statistics

Total Sold Volume By Month

	January	February	March	April	May	June	July	August	September	October	November	December
2005	\$2,793,375	\$3,896,000	\$2,471,392	\$4,848,610	\$7,780,395	\$6,688,441	\$6,479,650	\$8,060,075	\$6,150,165	\$5,651,250	\$4,212,700	\$4,256,160
2006	\$2,569,410	\$3,767,630	\$6,061,423	\$6,102,620	\$5,511,607	\$6,311,878	\$7,200,833	\$9,786,519	\$5,685,730	\$4,195,525	\$3,551,800	\$2,901,200
2007	\$3,524,350	\$3,069,960	\$4,720,600	\$4,100,387	\$5,577,786	\$5,751,425	\$4,572,059	\$8,645,900	\$4,647,700	\$4,727,590	\$3,878,400	\$1,935,600
2008	\$2,725,041	\$3,300,050	\$4,330,200	\$3,809,590	\$6,412,070	\$5,492,250	\$4,545,480	\$5,383,050	\$3,790,300	\$5,473,552	\$1,328,000	\$2,250,500
2009	\$1,817,675	\$2,539,000	\$1,627,149	\$2,360,200	\$4,404,050	\$2,477,049	\$5,362,350	\$5,406,553	\$4,749,650			

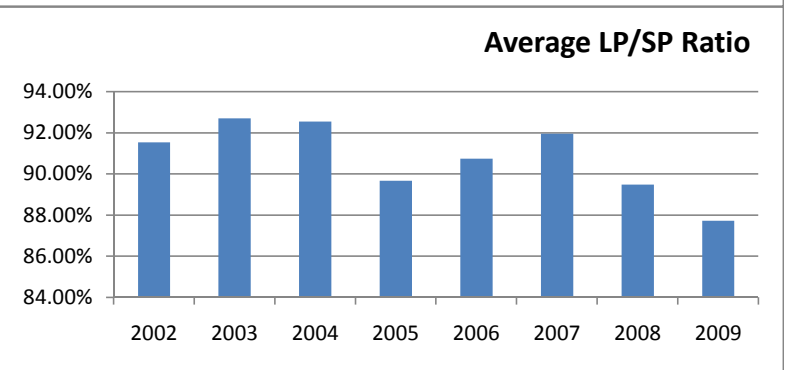
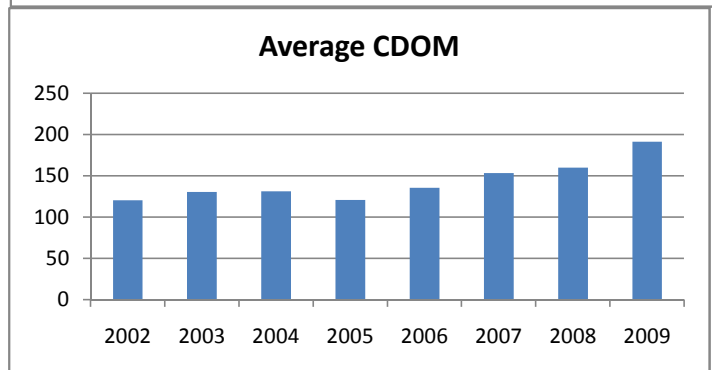
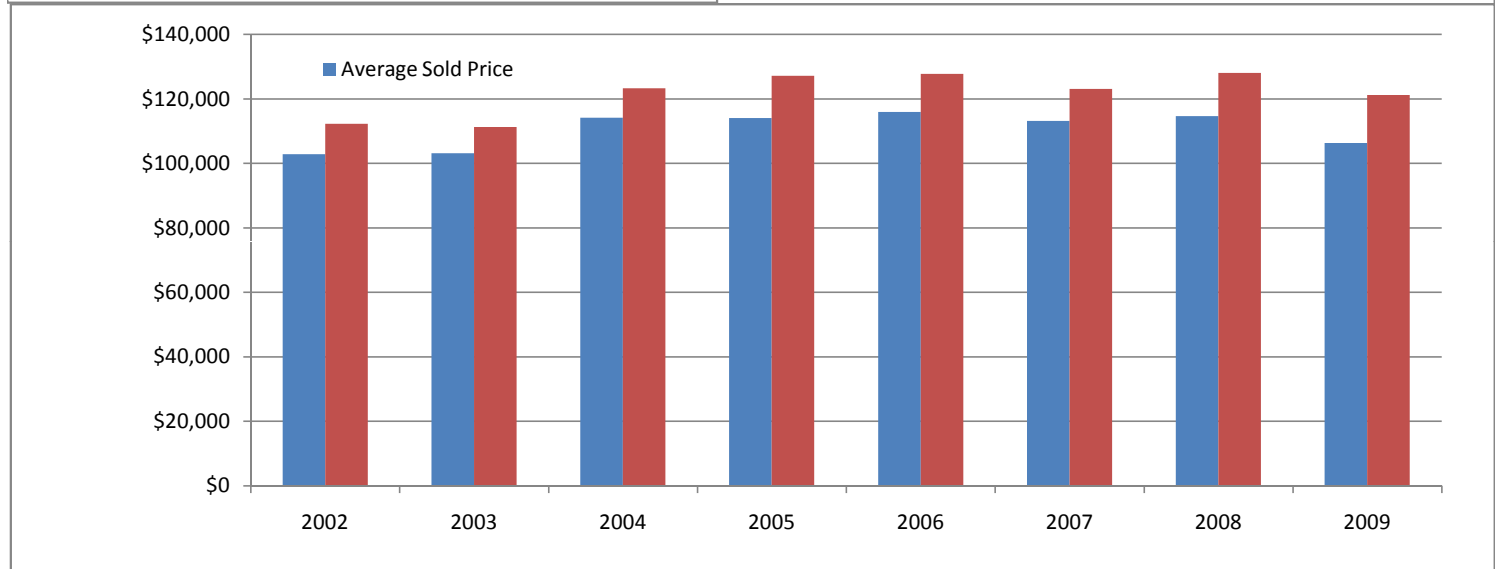
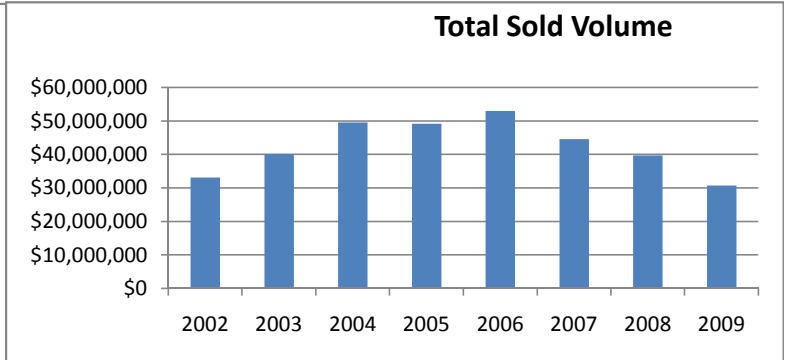
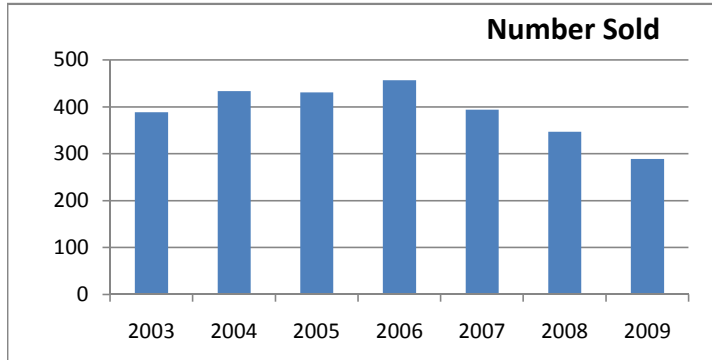
Total Sold Volume By Month



Logan County

WRIST Inc. Housing Statistics (All Areas)

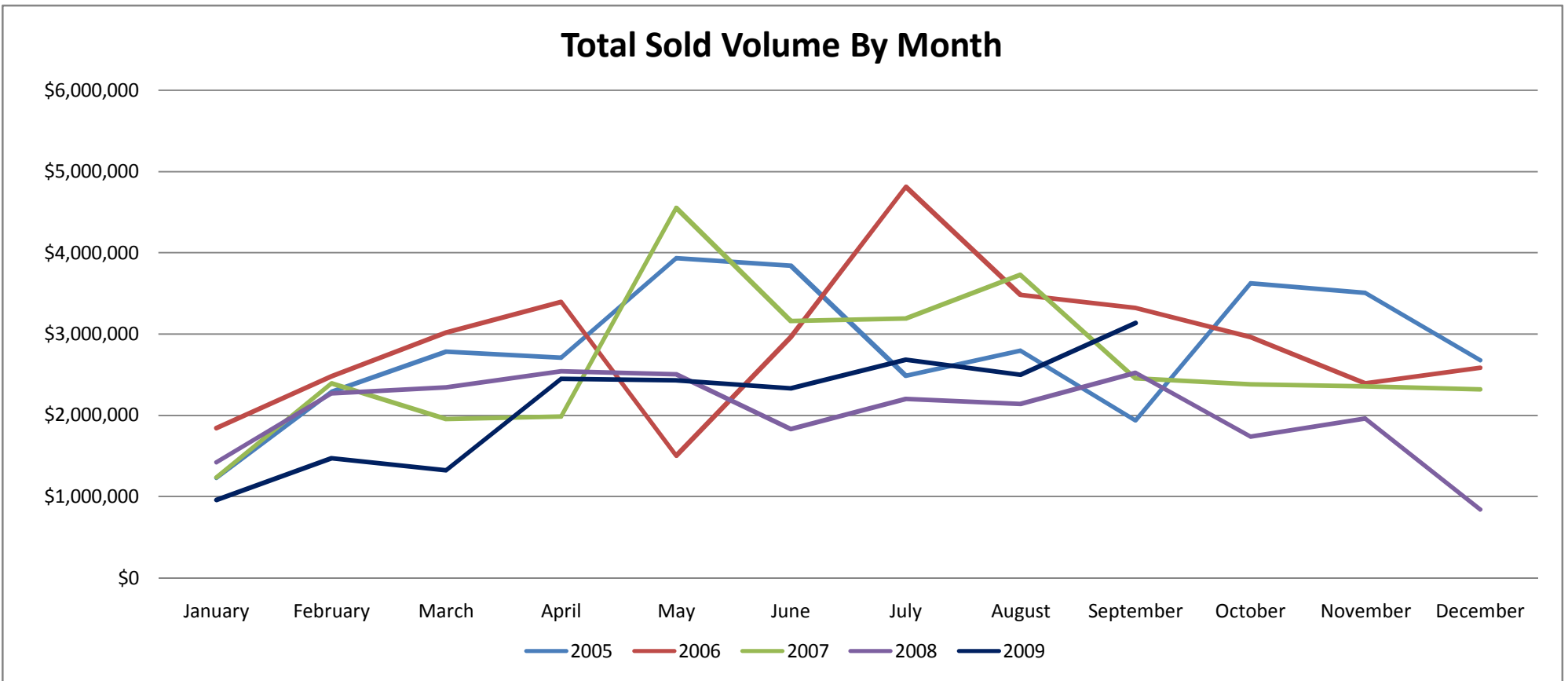
	2002	2003	2004	2005	2006	2007	2008	2009
Number Sold	322	389	434	431	457	394	347	289
Average Sold Price	\$102,866	\$103,182	\$114,160	\$114,079	\$115,969	\$113,224	\$114,663	\$106,380
Total Sold Volume	\$33,122,951	\$40,137,656	\$49,545,624	\$49,168,103	\$52,997,650	\$44,610,167	\$39,788,031	\$30,743,676
Average CDOM	120	131	131	121	135	153	160	191
Average Original LP	\$112,361	\$111,288	\$123,343	\$127,216	\$127,790	\$123,121	\$128,130	\$121,252
Average LP/SP Ratio	91.55%	92.72%	92.56%	89.67%	90.75%	91.96%	89.49%	87.73%



Mercer County WRIST Inc. Housing Statistics

Total Sold Volume By Month

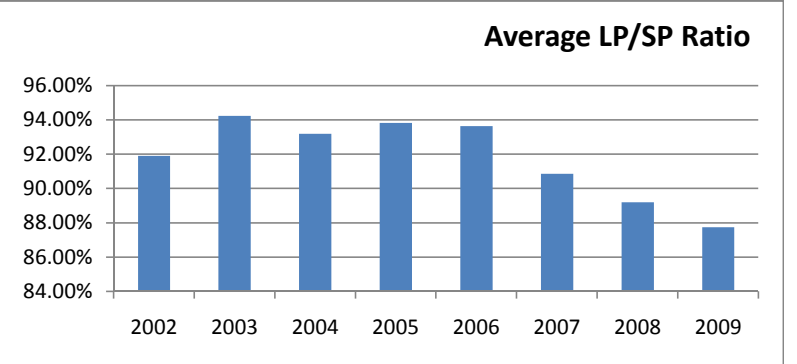
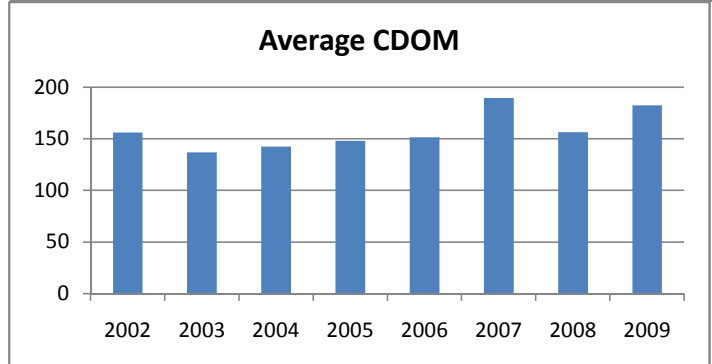
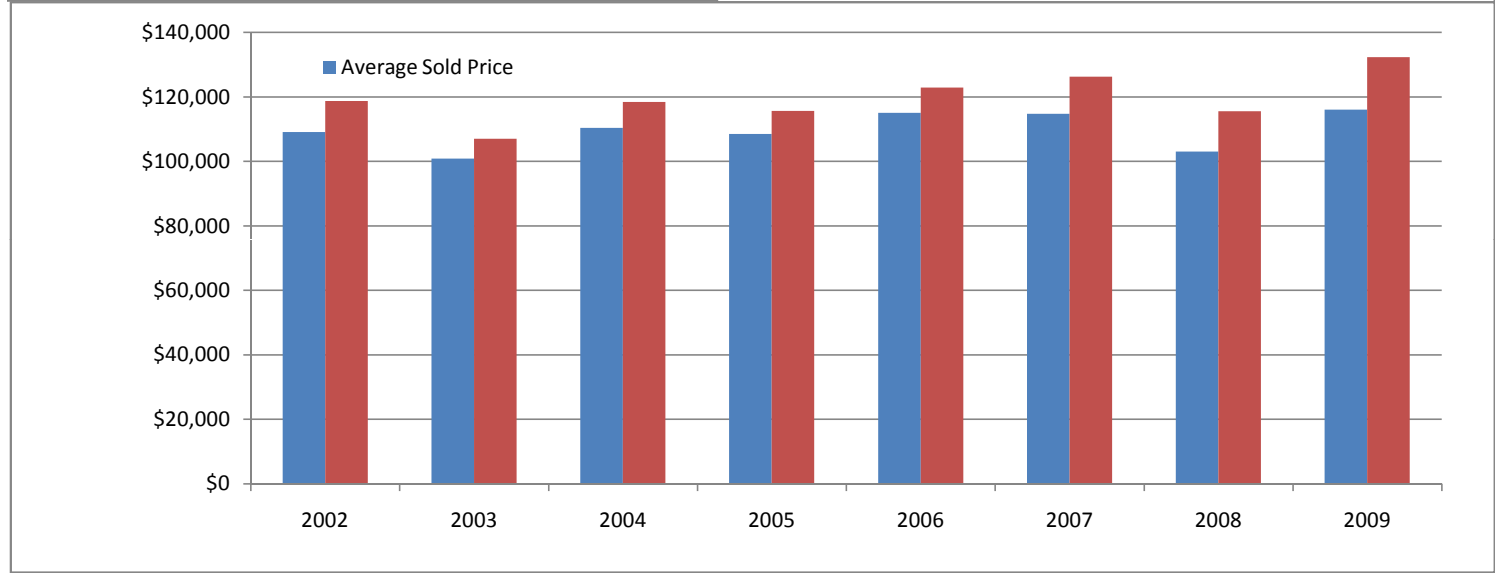
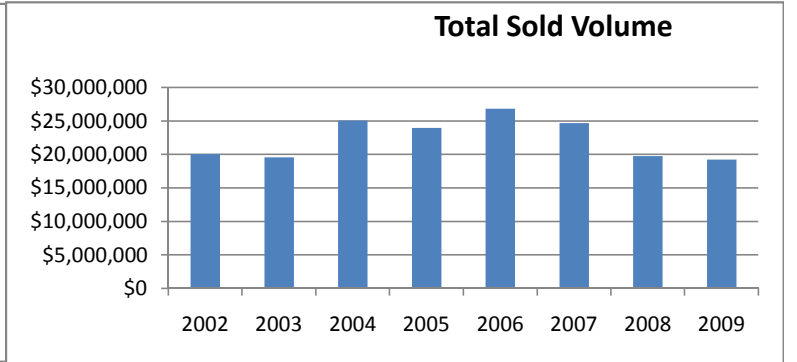
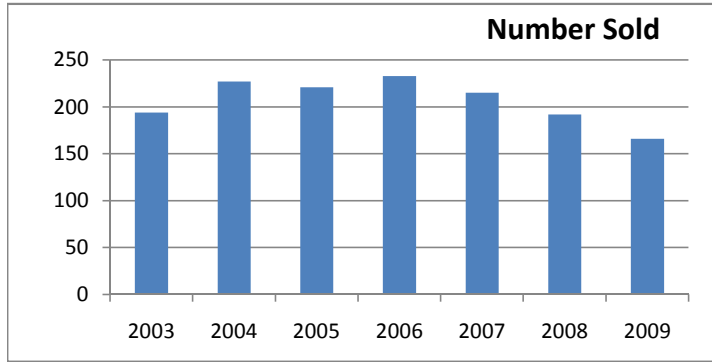
	January	February	March	April	May	June	July	August	September	October	November	December
2005	\$1,230,890	\$2,285,912	\$2,781,105	\$2,706,000	\$3,931,750	\$3,840,650	\$2,486,100	\$2,795,006	\$1,935,900	\$3,622,425	\$3,503,000	\$2,677,900
2006	\$1,846,300	\$2,479,600	\$3,017,760	\$3,398,549	\$1,504,300	\$2,963,092	\$4,811,318	\$3,481,403	\$3,322,725	\$2,964,370	\$2,393,900	\$2,588,975
2007	\$1,239,200	\$2,396,900	\$1,957,800	\$1,984,550	\$4,552,617	\$3,160,785	\$3,194,700	\$3,733,400	\$2,458,950	\$2,380,471	\$2,355,800	\$2,323,600
2008	\$1,422,980	\$2,271,300	\$2,344,500	\$2,543,750	\$2,508,675	\$1,830,500	\$2,201,340	\$2,140,200	\$2,527,725	\$1,741,600	\$1,963,700	\$841,400
2009	\$959,200	\$1,474,370	\$1,321,500	\$2,444,950	\$2,430,100	\$2,332,800	\$2,682,350	\$2,494,375	\$3,132,400			



Mercer County

WRIST Inc. Housing Statistics (All Areas)

	2002	2003	2004	2005	2006	2007	2008	2009
Number Sold	184	194	227	221	233	215	192	166
Average Sold Price	\$109,164	\$100,906	\$110,424	\$108,567	\$115,129	\$114,786	\$103,078	\$116,097
Total Sold Volume	\$20,086,191	\$19,575,810	\$25,066,137	\$23,993,313	\$26,825,047	\$24,678,902	\$19,790,970	\$19,272,045
Average CDOM	156	137	143	148	152	190	156	183
Average Original LP	\$118,767	\$107,064	\$118,472	\$115,710	\$122,947	\$126,317	\$115,545	\$132,315
Average LP/SP Ratio	91.91%	94.25%	93.21%	93.83%	93.64%	90.87%	89.21%	87.74%



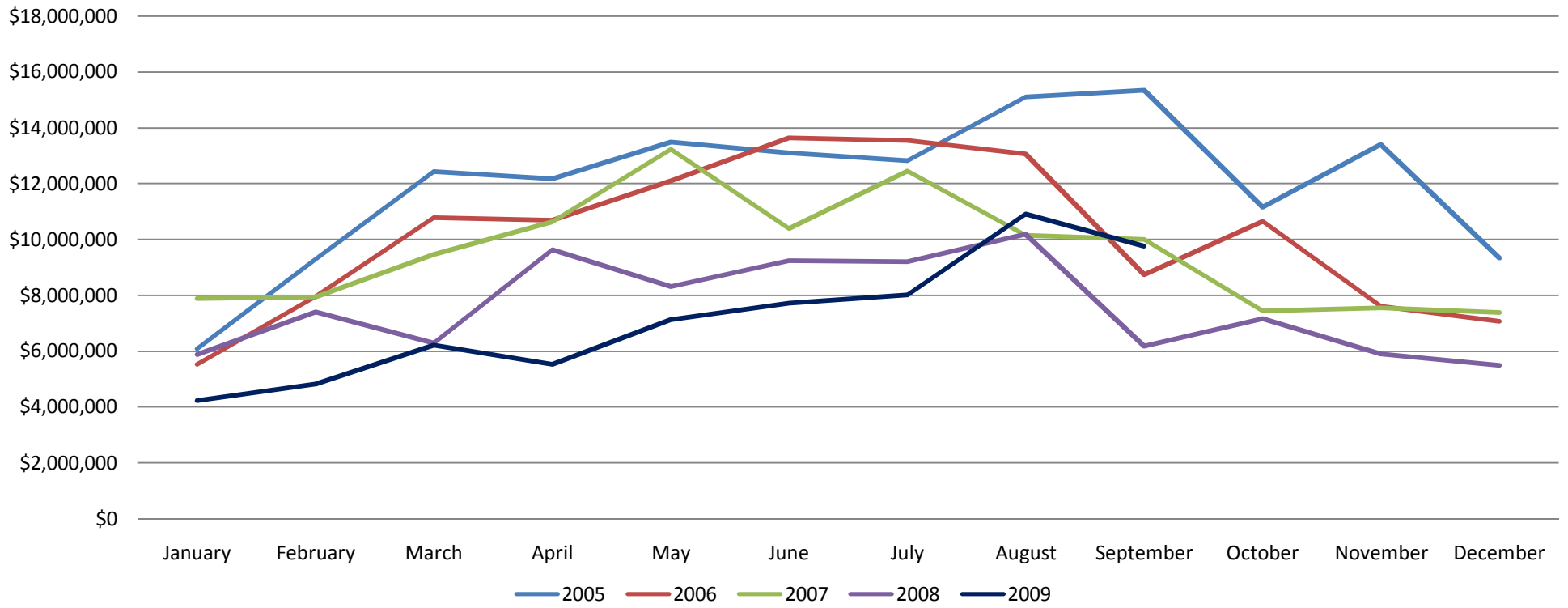
Miami County

WRIST Inc. Housing Statistics

Total Sold Volume By Month

	January	February	March	April	May	June	July	August	September	October	November	December
2005	\$6,079,350	\$9,295,100	\$12,427,881	\$12,174,674	\$13,486,897	\$13,091,048	\$12,811,751	\$15,105,540	\$15,343,381	\$11,147,100	\$13,401,277	\$9,334,895
2006	\$5,533,204	\$7,969,265	\$10,776,750	\$10,690,356	\$12,094,939	\$13,631,100	\$13,534,681	\$13,048,295	\$8,735,195	\$10,654,732	\$7,600,325	\$7,078,860
2007	\$7,882,783	\$7,942,140	\$9,452,125	\$10,618,900	\$13,219,708	\$10,389,610	\$12,438,615	\$10,143,745	\$9,986,261	\$7,432,505	\$7,551,646	\$7,377,180
2008	\$5,897,140	\$7,404,894	\$6,294,768	\$9,632,014	\$8,319,046	\$9,247,852	\$9,209,150	\$10,191,116	\$6,182,547	\$7,160,003	\$5,902,203	\$5,499,270
2009	\$4,231,206	\$4,820,463	\$6,223,050	\$5,527,271	\$7,132,427	\$7,723,900	\$8,017,410	\$10,917,919	\$9,767,428			

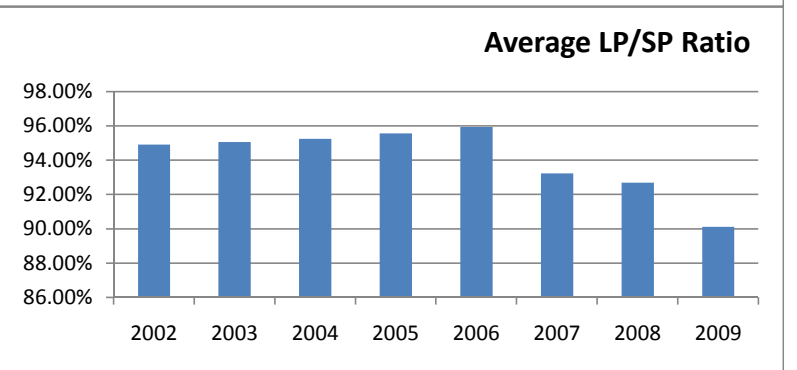
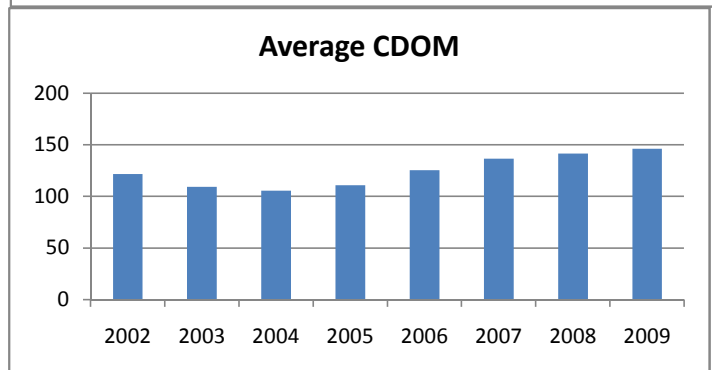
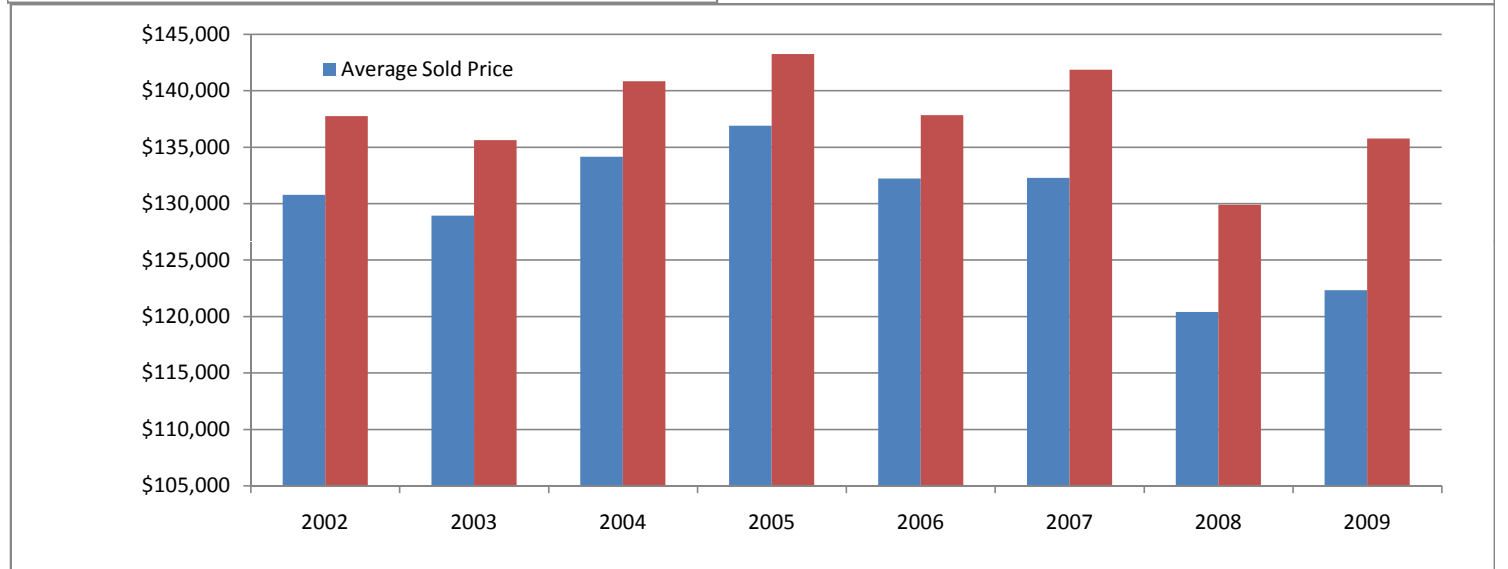
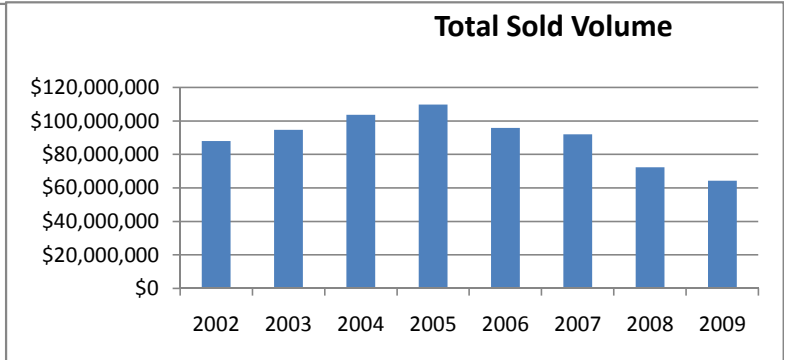
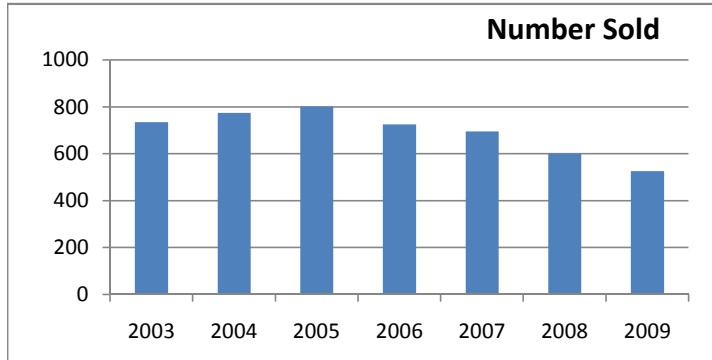
Total Sold Volume By Month



Miami County

WRIST Inc. Housing Statistics (All Areas)

	2002	2003	2004	2005	2006	2007	2008	2009
Number Sold	674	735	774	802	726	696	601	526
Average Sold Price	\$130,786	\$128,961	\$134,170	\$136,927	\$132,250	\$132,290	\$120,430	\$122,359
Total Sold Volume	\$88,149,592	\$94,786,161	\$103,847,266	\$109,815,622	\$96,013,785	\$92,073,887	\$72,378,527	\$64,361,074
Average CDOM	122	109	106	111	126	137	142	146
Average Original LP	\$137,772	\$135,654	\$140,850	\$143,265	\$137,843	\$141,873	\$129,925	\$135,776
Average LP/SP Ratio	94.93%	95.07%	95.26%	95.58%	95.94%	93.25%	92.69%	90.12%

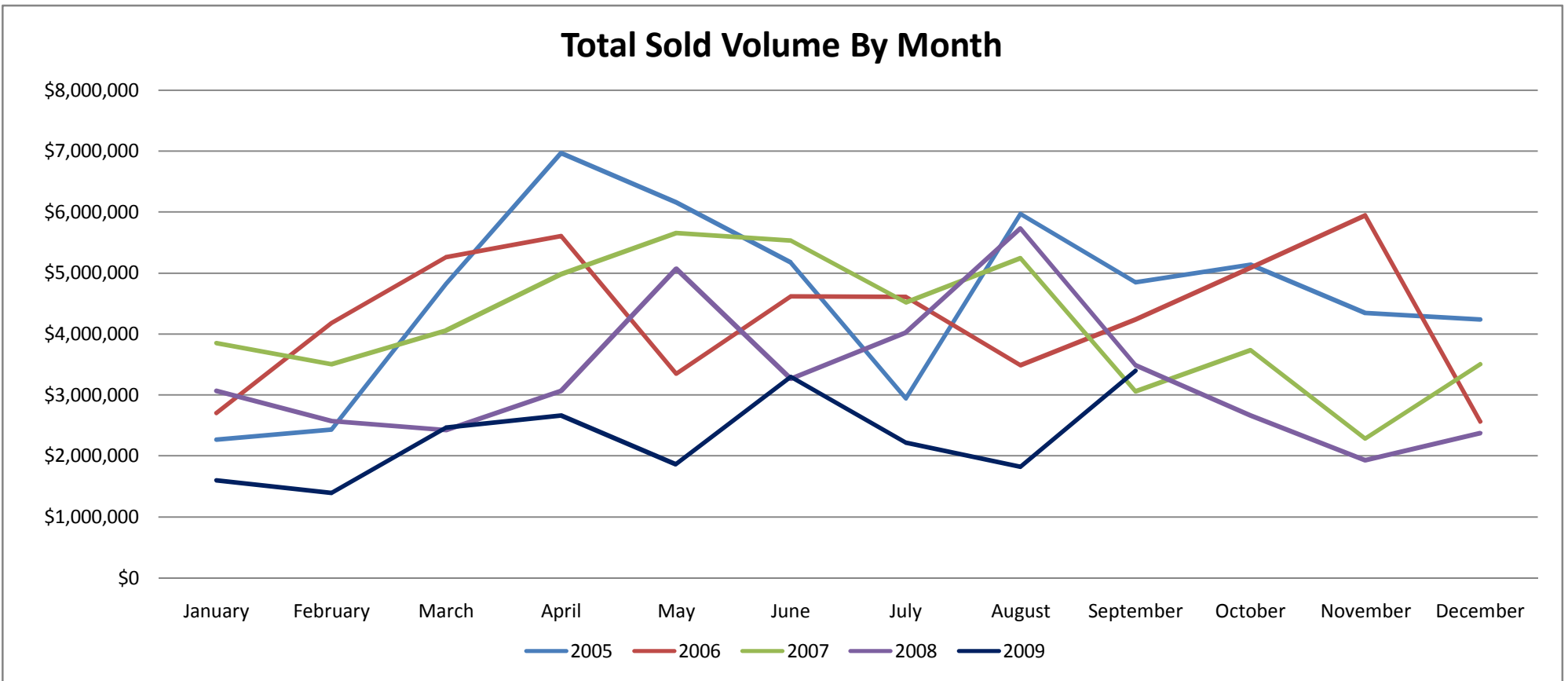


Shelby County

WRIST Inc. Housing Statistics

Total Sold Volume By Month

	January	February	March	April	May	June	July	August	September	October	November	December
2005	\$2,263,460	\$2,429,250	\$4,825,100	\$6,968,412	\$6,160,706	\$5,169,430	\$2,942,760	\$5,966,395	\$4,850,715	\$5,132,650	\$4,343,523	\$4,232,400
2006	\$2,698,550	\$4,177,015	\$5,260,800	\$5,603,260	\$3,346,650	\$4,612,951	\$4,609,050	\$3,487,550	\$4,237,660	\$5,083,980	\$5,942,675	\$2,562,150
2007	\$3,856,140	\$3,507,060	\$4,061,659	\$4,983,450	\$5,659,700	\$5,532,905	\$4,522,250	\$5,244,130	\$3,063,050	\$3,738,800	\$2,288,000	\$3,509,900
2008	\$3,061,350	\$2,573,475	\$2,418,100	\$3,061,775	\$5,069,250	\$3,264,252	\$4,026,090	\$5,730,630	\$3,484,250	\$2,659,550	\$1,926,700	\$2,375,170
2009	\$1,601,150	\$1,397,375	\$2,467,650	\$2,667,948	\$1,862,925	\$3,299,701	\$2,223,700	\$1,823,650	\$3,396,840			



Shelby County

WRIST Inc. Housing Statistics (All Areas)

	2002	2003	2004	2005	2006	2007	2008	2009
Number Sold	305	320	358	350	332	354	282	214
Average Sold Price	\$104,744	\$110,047	\$112,115	\$118,789	\$114,559	\$114,210	\$115,919	\$96,920
Total Sold Volume	\$31,946,879	\$35,215,168	\$40,137,189	\$41,576,228	\$38,033,486	\$40,430,344	\$32,689,172	\$20,740,939
Average CDOM	136	140	130	120	140	147	189	158
Average Original LP	\$111,034	\$116,158	\$118,114	\$124,536	\$120,555	\$121,133	\$126,286	\$109,123
Average LP/SP Ratio	94.34%	94.74%	94.92%	95.39%	95.03%	94.29%	91.79%	88.82%

