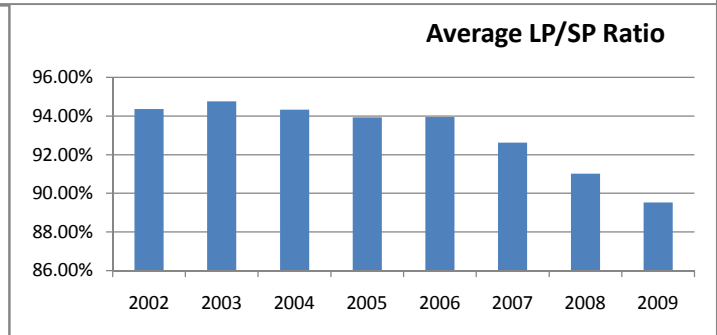
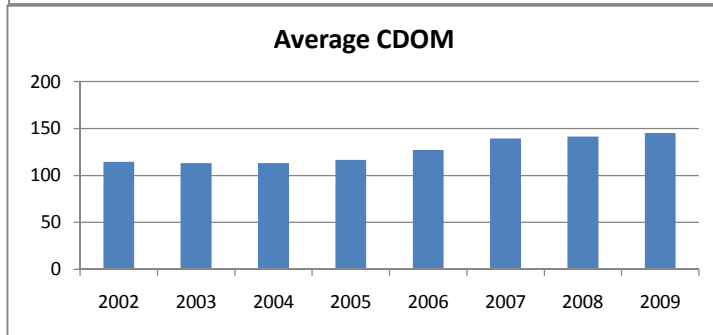
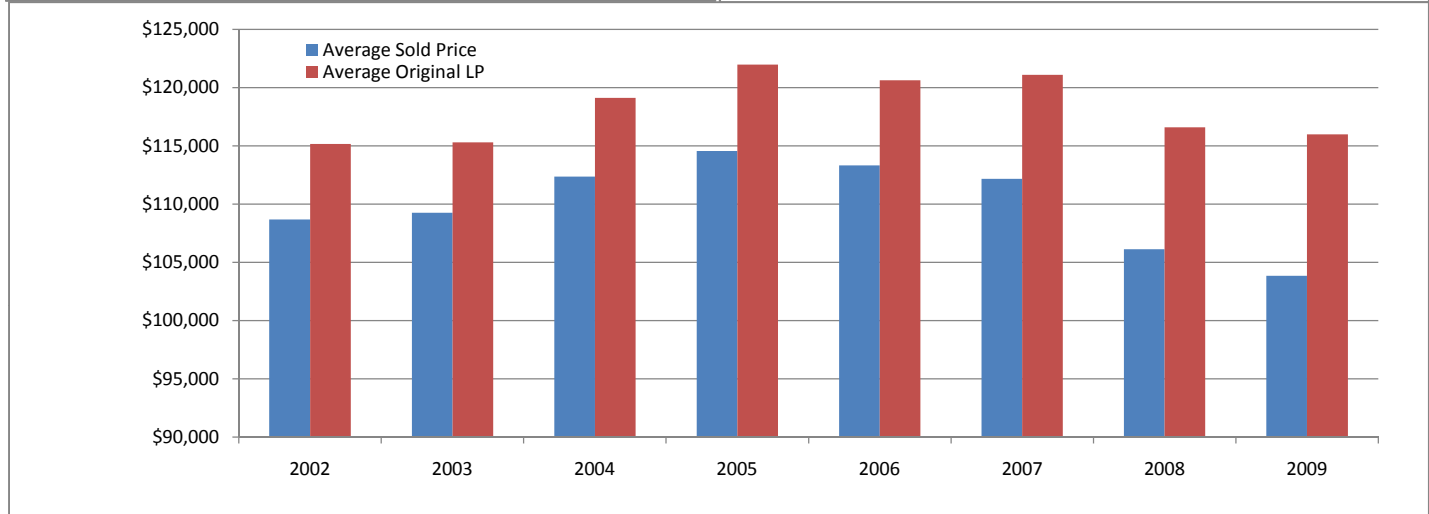
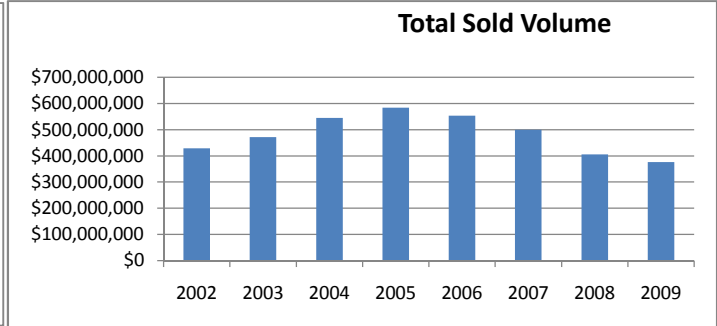
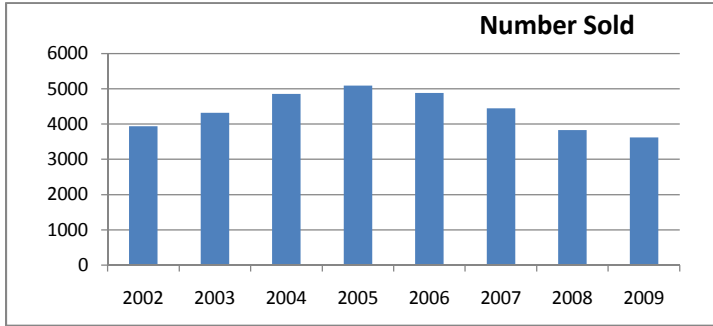


All Areas

WRIST Inc. Housing Statistics (All Areas)

	2002	2003	2004	2005	2006	2007	2008	2009
Number Sold	3941	4319	4853	5095	4884	4452	3827	3618
Average Sold Price	\$108,678	\$109,263	\$112,353	\$114,571	\$113,317	\$112,171	\$106,114	\$103,838
Total Sold Volume	\$428,298,066	\$471,907,666	\$545,250,441	\$583,738,971	\$553,440,685	\$499,385,125	\$406,099,050	\$375,685,099
Average CDOM	114	113	113	116	127	139	141	145
Average Original LP	\$115,172	\$115,307	\$119,110	\$121,975	\$120,622	\$121,100	\$116,596	\$115,994
Average LP/SP Ratio	94.36%	94.76%	94.33%	93.93%	93.94%	92.63%	91.01%	89.52%



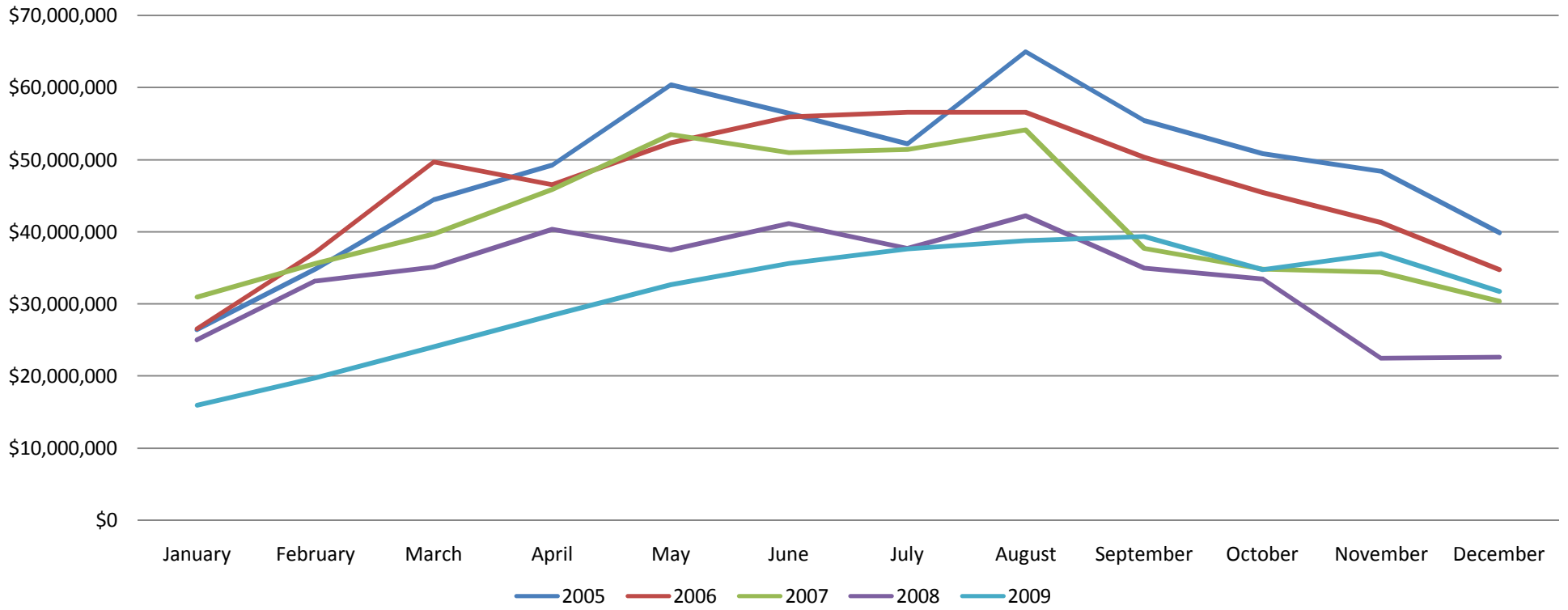
All Areas

WRIST Inc. Housing Statistics

Total Sold Volume By Month

	January	February	March	April	May	June	July	August	September	October	November	December
2005	\$26,427,939	\$34,805,019	\$44,494,624	\$49,302,674	\$60,398,387	\$56,467,453	\$52,207,305	\$65,004,636	\$55,460,934	\$50,863,016	\$48,440,093	\$39,866,891
2006	\$26,560,285	\$37,188,916	\$49,725,330	\$46,585,617	\$52,356,031	\$55,943,723	\$56,618,100	\$56,606,009	\$50,360,147	\$45,477,749	\$41,291,601	\$34,727,177
2007	\$30,965,307	\$35,571,180	\$39,671,504	\$45,871,299	\$53,479,152	\$51,018,755	\$51,410,434	\$54,147,749	\$37,684,169	\$34,825,722	\$34,382,722	\$30,357,132
2008	\$25,020,316	\$33,238,355	\$35,140,470	\$40,406,114	\$37,540,676	\$41,186,179	\$37,710,025	\$42,259,809	\$34,972,236	\$33,468,397	\$22,500,108	\$22,656,365
2009	\$15,925,977	\$19,711,885	\$24,017,994	\$28,399,099	\$32,663,147	\$35,641,552	\$37,666,886	\$38,770,173	\$39,357,420	\$34,760,433	\$36,999,654	\$31,770,879

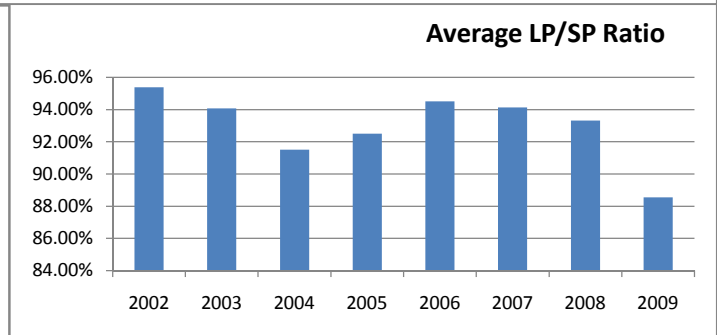
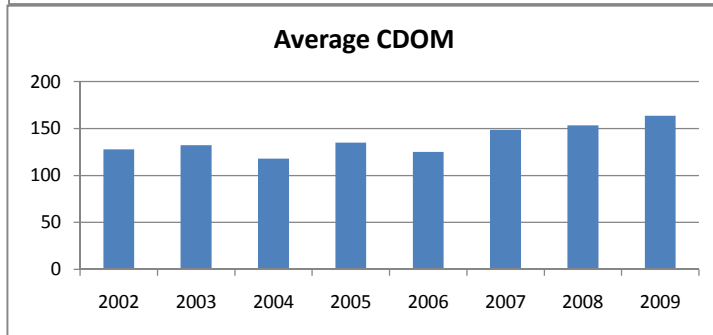
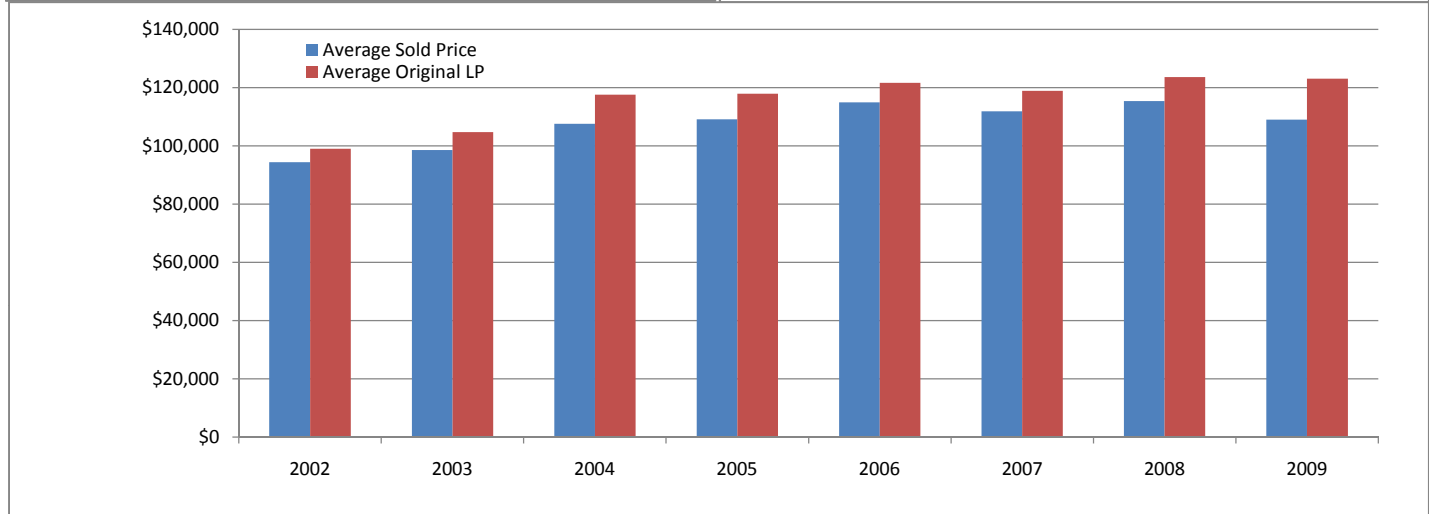
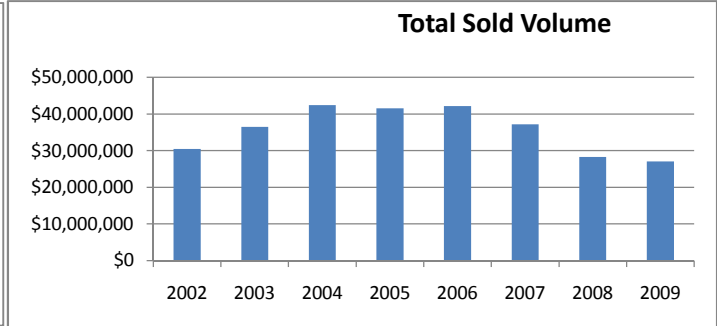
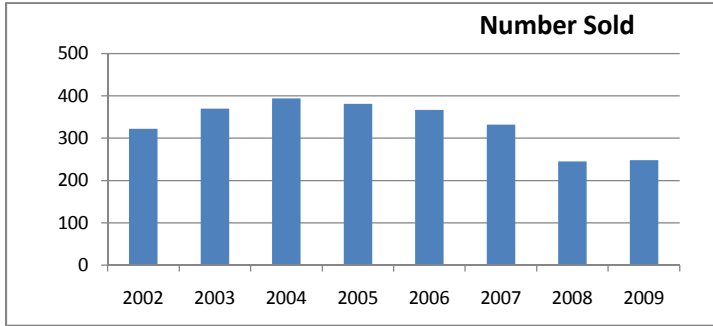
Total Sold Volume By Month



Auglaize County

WRIST Inc. Housing Statistics

	2002	2003	2004	2005	2006	2007	2008	2009
Number Sold	322	370	394	381	367	332	245	248
Average Sold Price	\$94,449	\$98,561	\$107,635	\$109,119	\$114,938	\$111,911	\$115,335	\$109,018
Total Sold Volume	\$30,412,490	\$36,467,640	\$42,408,029	\$41,574,409	\$42,182,274	\$37,154,611	\$28,257,014	\$27,036,425
Average CDOM	128	132	118	135	125	149	153	164
Average Original LP	\$99,026	\$104,774	\$117,617	\$117,965	\$121,606	\$118,897	\$123,589	\$123,114
Average LP/SP Ratio	95.38%	94.07%	91.51%	92.50%	94.52%	94.12%	93.32%	88.55%

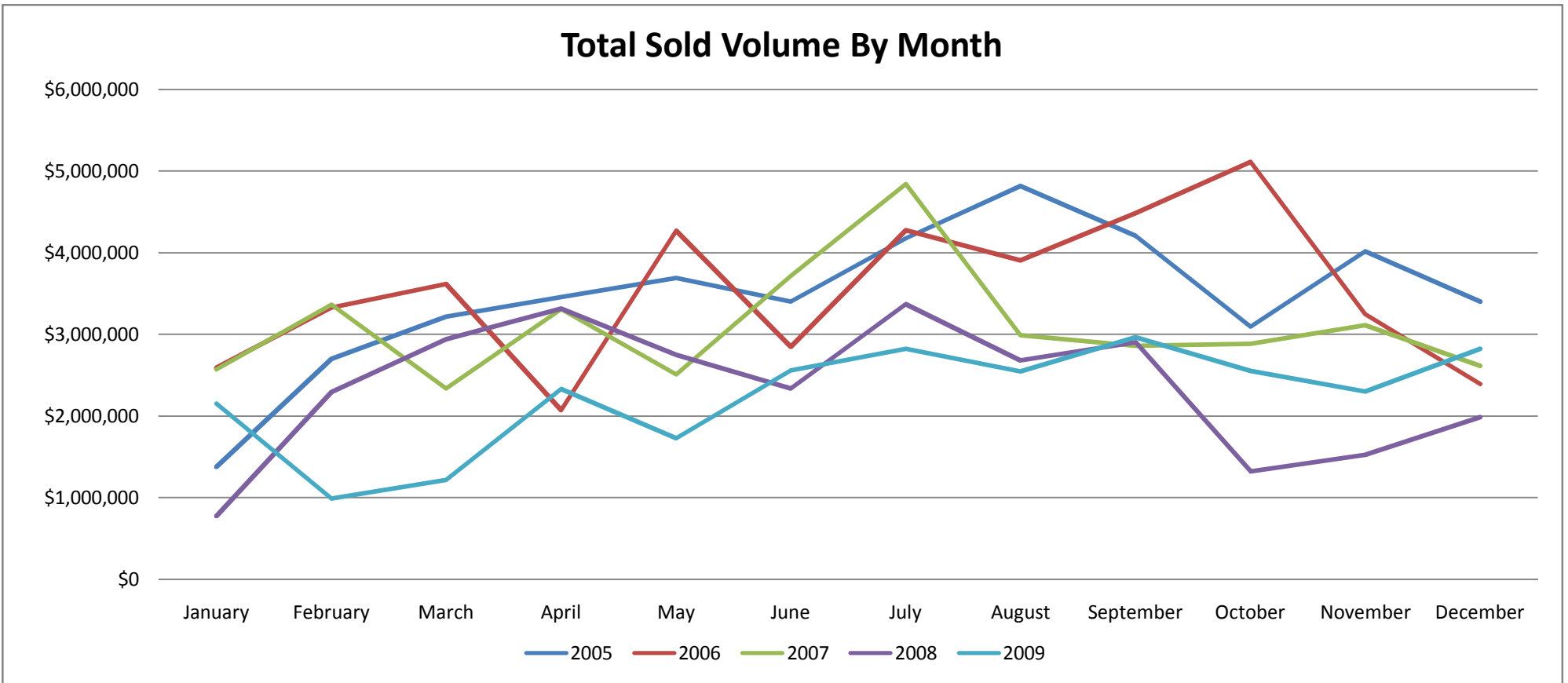


Auglaize County

WRIST Inc. Housing Statistics

Total Sold Volume By Month

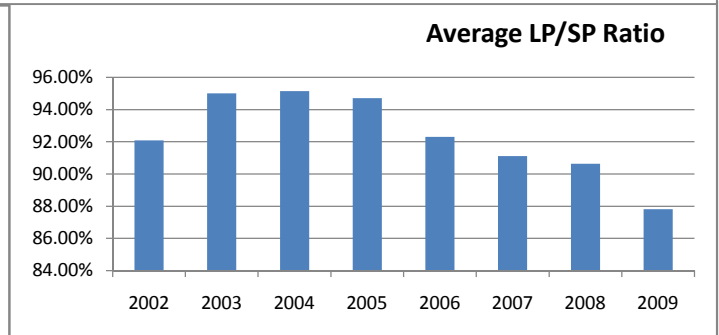
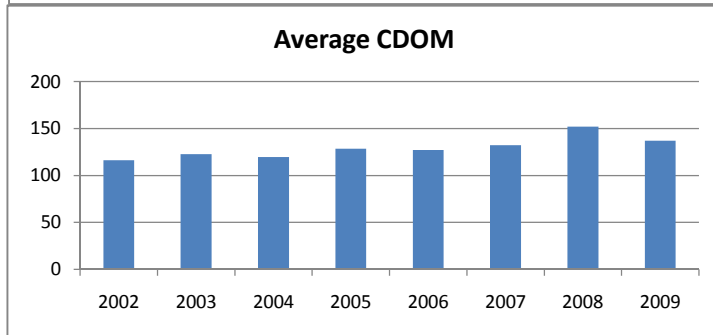
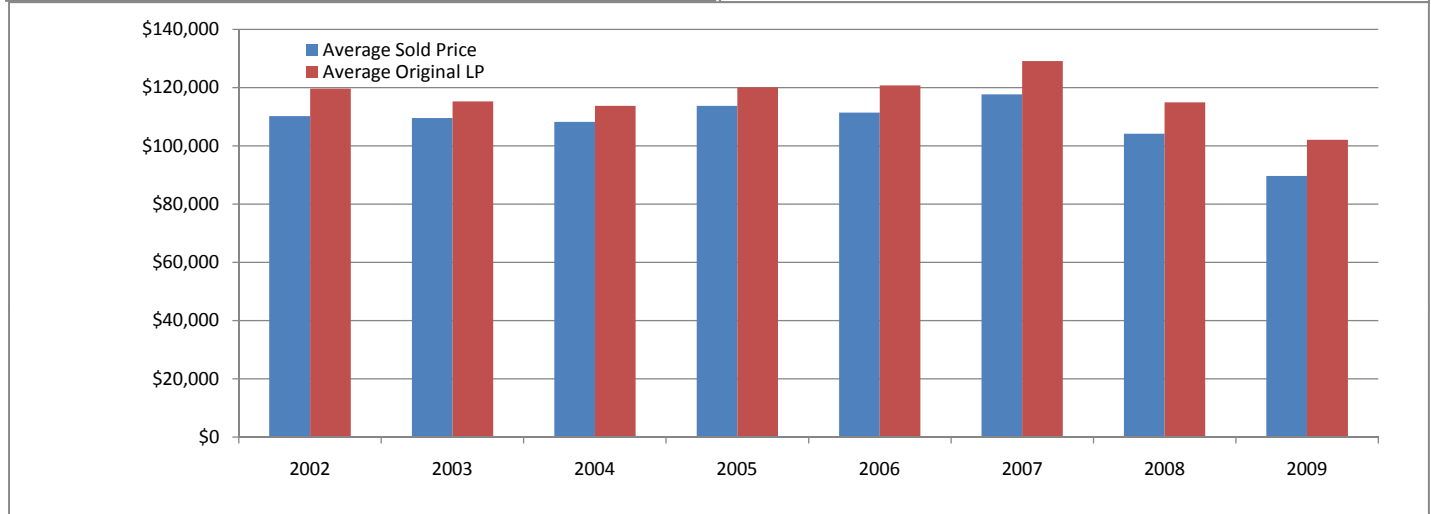
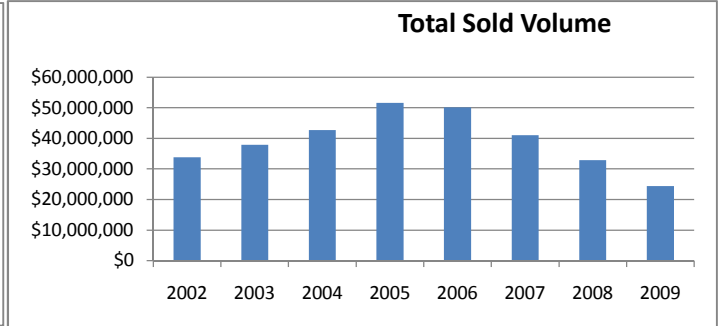
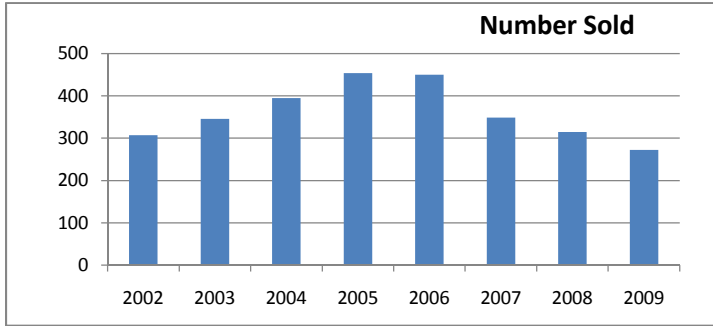
	January	February	March	April	May	June	July	August	September	October	November	December
2005	\$1,379,860	\$2,700,651	\$3,217,015	\$3,458,202	\$3,691,000	\$3,401,650	\$4,179,500	\$4,817,550	\$4,207,825	\$3,095,800	\$4,021,106	\$3,404,250
2006	\$2,590,922	\$3,329,550	\$3,622,875	\$2,072,500	\$4,271,883	\$2,850,175	\$4,280,890	\$3,908,920	\$4,491,594	\$5,118,715	\$3,249,800	\$2,394,450
2007	\$2,572,033	\$3,368,250	\$2,340,700	\$3,314,972	\$2,513,650	\$3,719,600	\$4,845,150	\$2,995,035	\$2,863,550	\$2,891,400	\$3,113,541	\$2,616,730
2008	\$777,400	\$2,300,600	\$2,942,900	\$3,318,540	\$2,756,985	\$2,340,445	\$3,376,300	\$2,687,149	\$2,907,945	\$1,324,800	\$1,530,550	\$1,993,400
2009	\$2,156,800	\$993,350	\$1,218,350	\$2,334,400	\$1,731,900	\$2,565,750	\$2,828,050	\$2,552,500	\$2,969,450	\$2,556,350	\$2,304,025	\$2,825,500



Champaign County

WRIST Inc. Housing Statistics

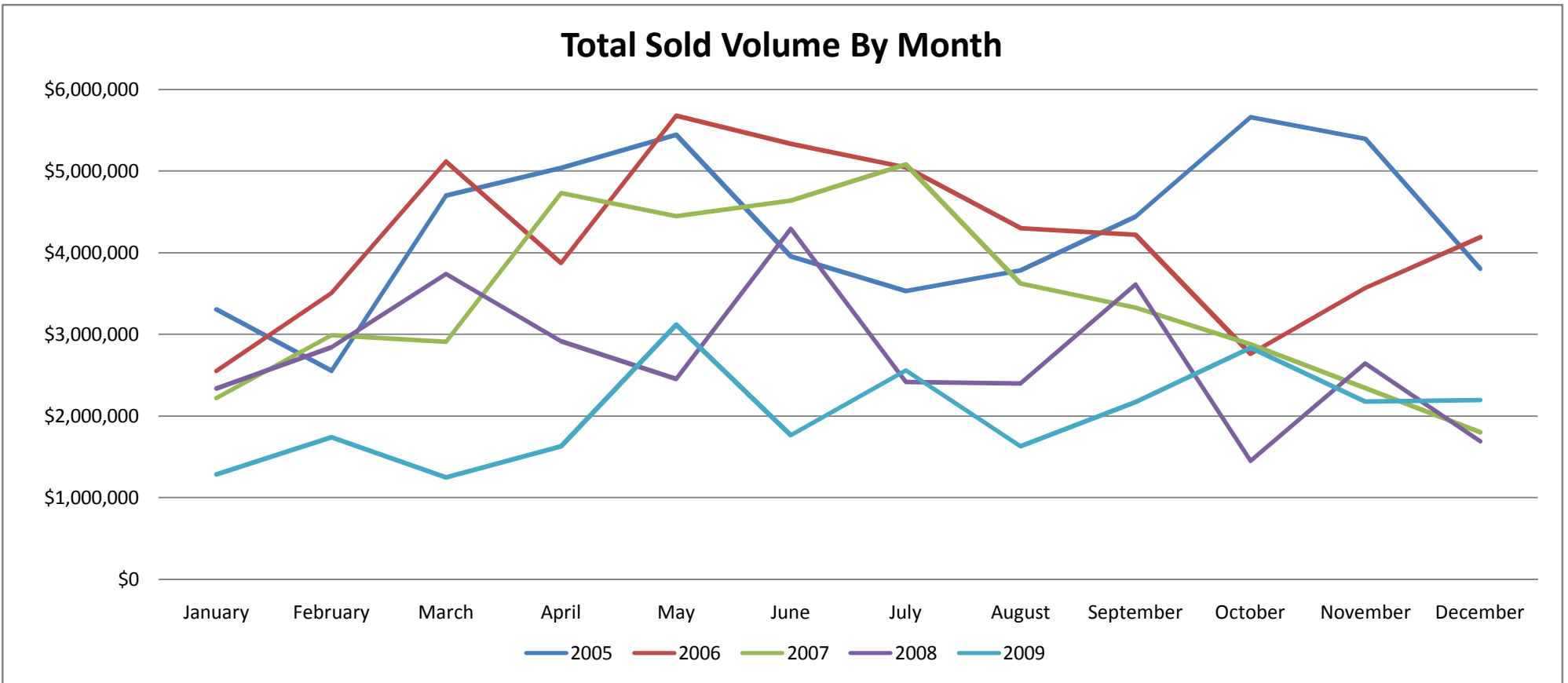
	2002	2003	2004	2005	2006	2007	2008	2009
Number Sold	307	346	395	454	450	349	315	272
Average Sold Price	\$110,167	\$109,558	\$108,254	\$113,741	\$111,450	\$117,638	\$104,216	\$89,668
Total Sold Volume	\$33,821,182	\$37,906,906	\$42,760,282	\$51,638,306	\$50,152,667	\$41,055,691	\$32,828,025	\$24,389,573
Average CDOM	116	123	120	128	127	132	152	137
Average Original LP	\$119,627	\$115,314	\$113,775	\$120,104	\$120,744	\$129,118	\$114,983	\$102,119
Average LP/SP Ratio	92.09%	95.01%	95.15%	94.70%	92.30%	91.11%	90.64%	87.81%



Champaign County WRIST Inc. Housing Statistics

Total Sold Volume By Month

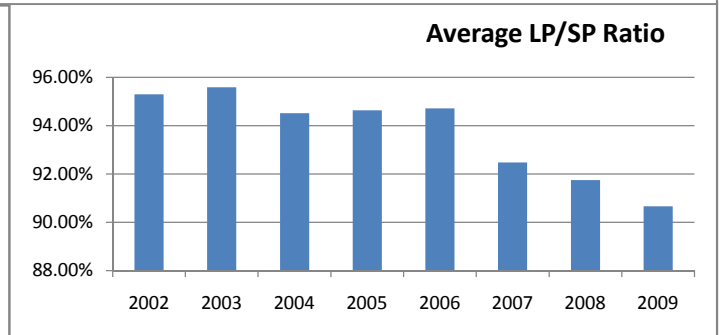
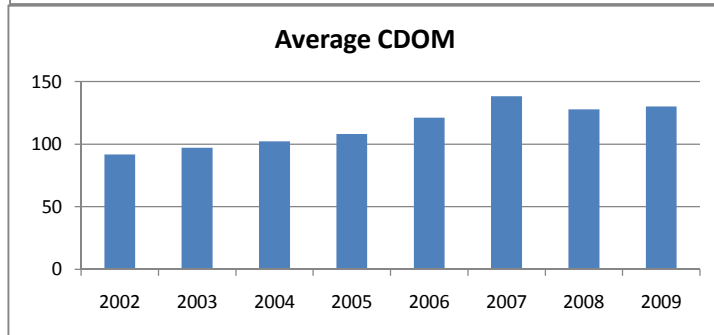
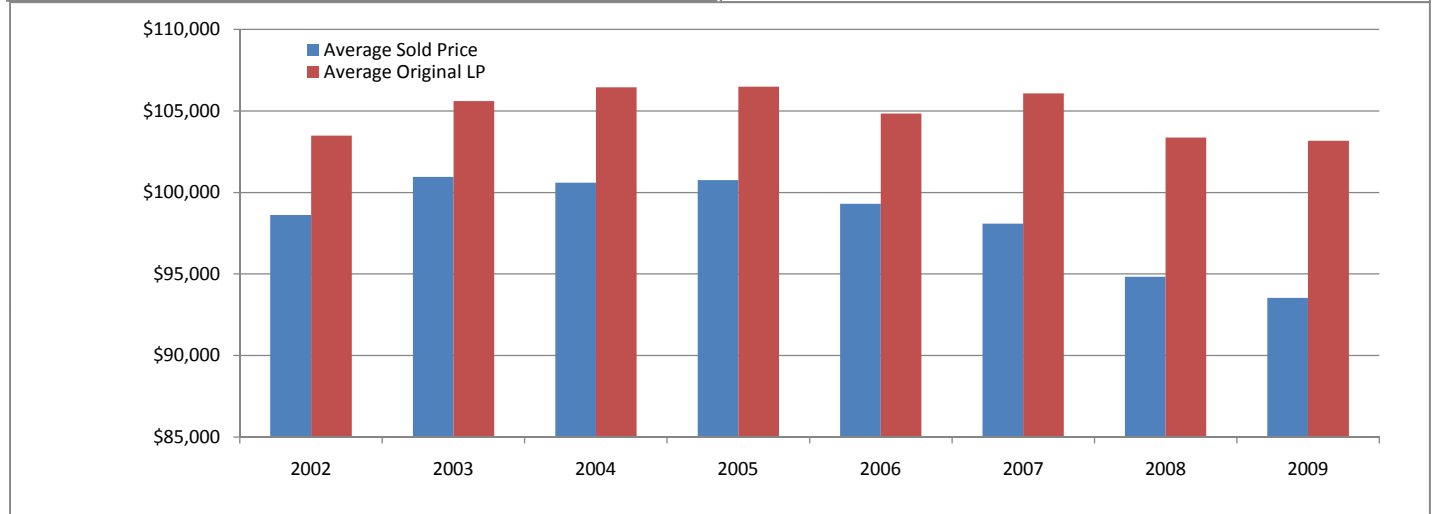
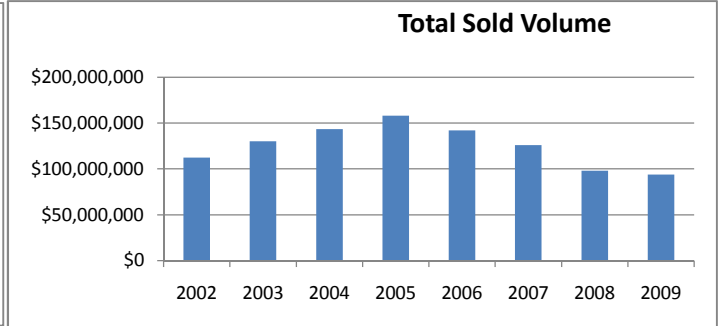
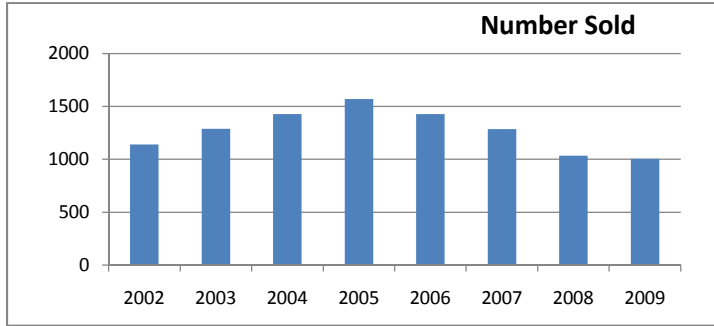
	January	February	March	April	May	June	July	August	September	October	November	December
2005	\$3,306,100	\$2,555,414	\$4,702,152	\$5,043,100	\$5,448,680	\$3,959,701	\$3,530,452	\$3,784,800	\$4,445,797	\$5,661,350	\$5,394,150	\$3,806,610
2006	\$2,552,250	\$3,504,725	\$5,120,684	\$3,874,166	\$5,680,446	\$5,333,560	\$5,045,885	\$4,300,300	\$4,219,845	\$2,758,685	\$3,569,303	\$4,192,818
2007	\$2,225,850	\$2,996,800	\$2,916,394	\$4,733,000	\$4,450,156	\$4,646,530	\$5,086,710	\$3,630,412	\$3,335,485	\$2,881,004	\$2,346,800	\$1,806,550
2008	\$2,339,500	\$2,842,502	\$3,743,000	\$2,917,255	\$2,455,900	\$4,297,118	\$2,422,300	\$2,400,950	\$3,614,710	\$1,454,800	\$2,645,550	\$1,694,440
2009	\$1,289,065	\$1,743,132	\$1,251,850	\$1,631,690	\$3,121,761	\$1,768,820	\$2,560,100	\$1,632,300	\$2,171,503	\$2,839,452	\$2,180,300	\$2,199,600



Clark County

WRIST Inc. Housing Statistics

	2002	2003	2004	2005	2006	2007	2008	2009
Number Sold	1140	1289	1427	1569	1429	1286	1034	1005
Average Sold Price	\$98,617	\$100,952	\$100,609	\$100,765	\$99,300	\$98,098	\$94,837	\$93,528
Total Sold Volume	\$112,423,564	\$130,127,655	\$143,569,587	\$158,099,781	\$141,900,033	\$126,154,379	\$98,061,860	\$93,996,023
Average CDOM	92	97	102	108	121	138	128	130
Average Original LP	\$103,486	\$105,608	\$106,446	\$106,482	\$104,839	\$106,080	\$103,373	\$103,164
Average LP/SP Ratio	95.30%	95.59%	94.52%	94.63%	94.72%	92.48%	91.74%	90.66%



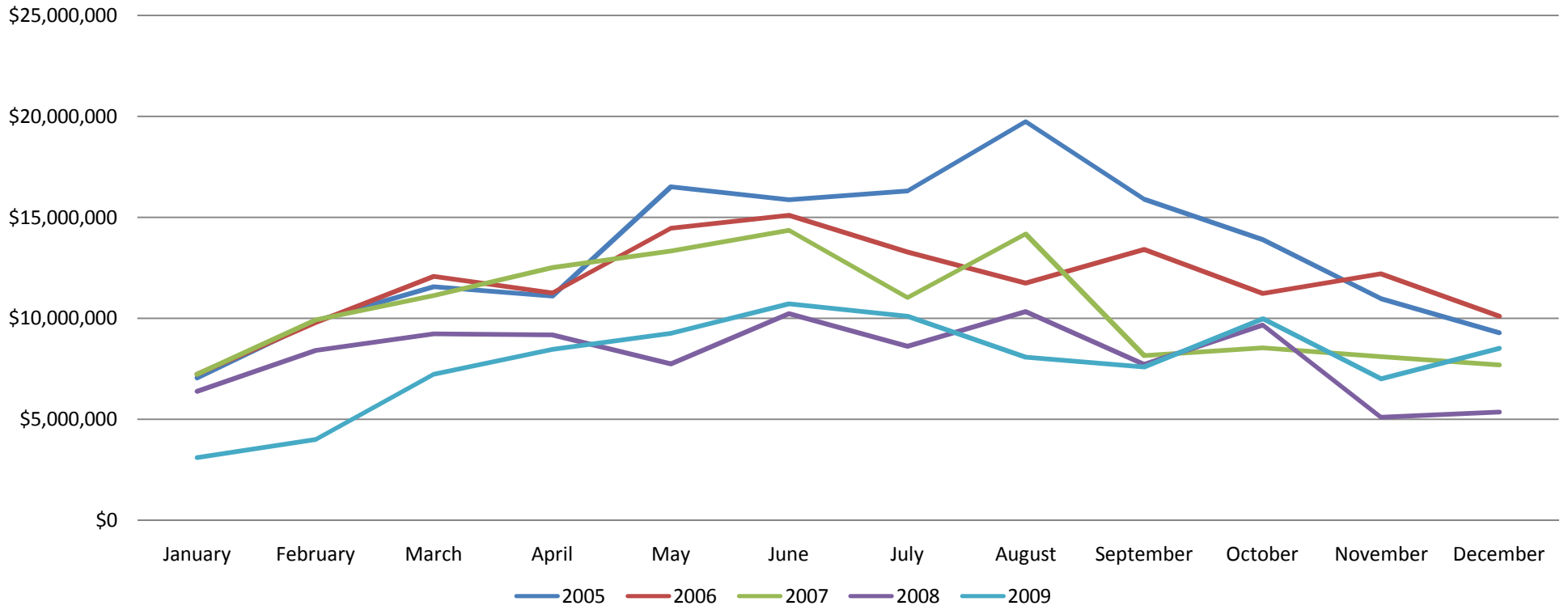
Clark County

WRIST Inc. Housing Statistics

Total Sold Volume By Month

	January	February	March	April	May	June	July	August	September	October	November	December
2005	\$7,060,673	\$9,883,792	\$11,570,404	\$11,099,690	\$16,509,169	\$15,873,253	\$16,314,497	\$19,743,870	\$15,889,924	\$13,895,591	\$10,973,217	\$9,285,701
2006	\$7,229,029	\$9,789,751	\$12,084,237	\$11,250,362	\$14,458,629	\$15,106,813	\$13,292,176	\$11,735,022	\$13,419,203	\$11,242,952	\$12,200,048	\$10,091,811
2007	\$7,230,901	\$9,912,430	\$11,129,065	\$12,518,080	\$13,332,485	\$14,353,500	\$11,015,650	\$14,182,077	\$8,156,998	\$8,533,076	\$8,106,460	\$7,683,657
2008	\$6,389,750	\$8,422,965	\$9,237,102	\$9,181,050	\$7,761,445	\$10,228,162	\$8,619,140	\$10,343,342	\$7,728,380	\$9,675,404	\$5,115,405	\$5,359,715
2009	\$3,100,500	\$3,997,463	\$7,234,401	\$8,462,490	\$9,261,694	\$10,720,257	\$10,101,339	\$8,070,996	\$7,579,129	\$9,974,264	\$6,991,200	\$8,502,290

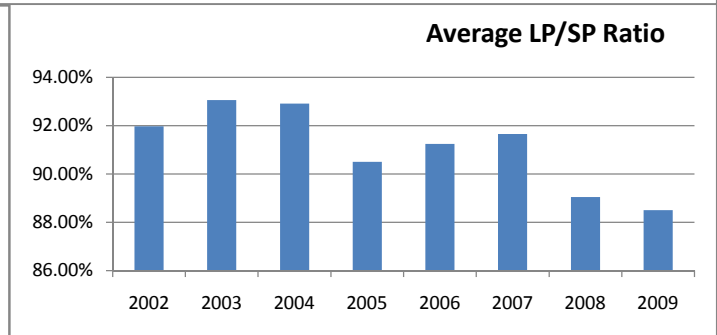
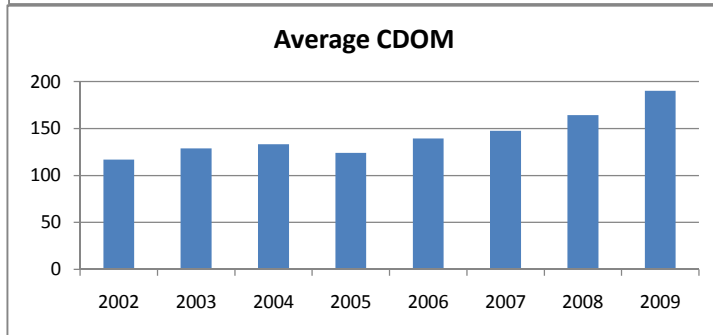
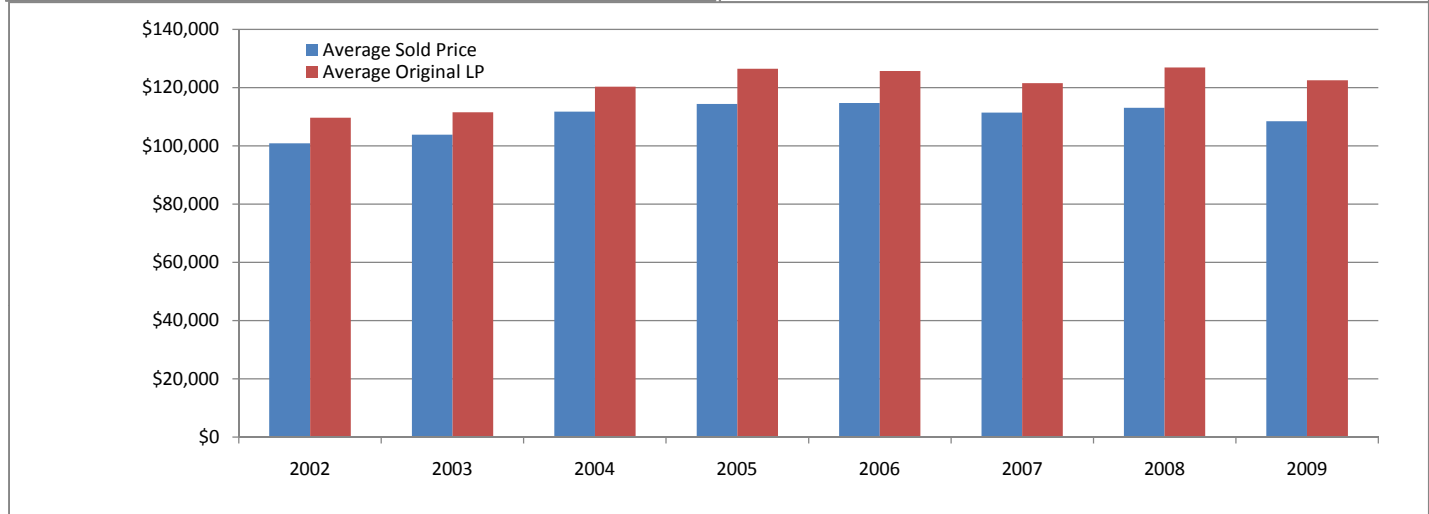
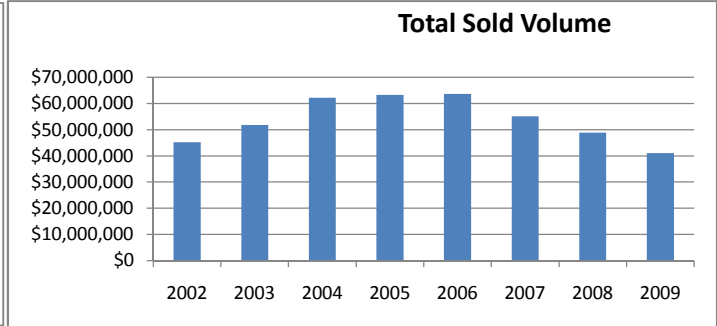
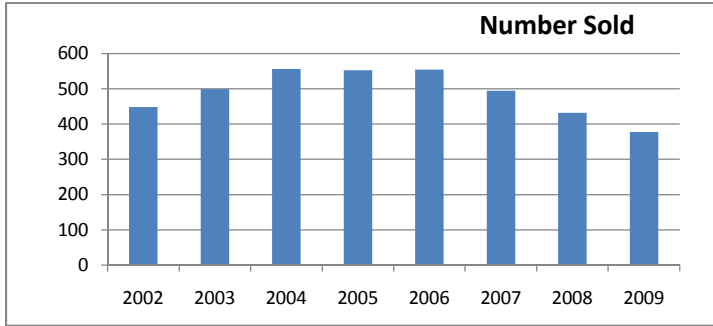
Total Sold Volume By Month



Logan County

WRIST Inc. Housing Statistics

	2002	2003	2004	2005	2006	2007	2008	2009
Number Sold	448	499	556	553	555	495	432	378
Average Sold Price	\$100,832	\$103,840	\$111,795	\$114,445	\$114,678	\$111,418	\$113,056	\$108,444
Total Sold Volume	\$45,172,696	\$51,816,235	\$62,158,217	\$63,288,213	\$63,646,175	\$55,151,757	\$48,840,083	\$40,991,956
Average CDOM	117	129	133	124	139	147	164	190
Average Original LP	\$109,630	\$111,585	\$120,319	\$126,460	\$125,688	\$121,564	\$126,969	\$122,538
Average LP/SP Ratio	91.97%	93.06%	92.92%	90.50%	91.24%	91.65%	89.04%	88.50%



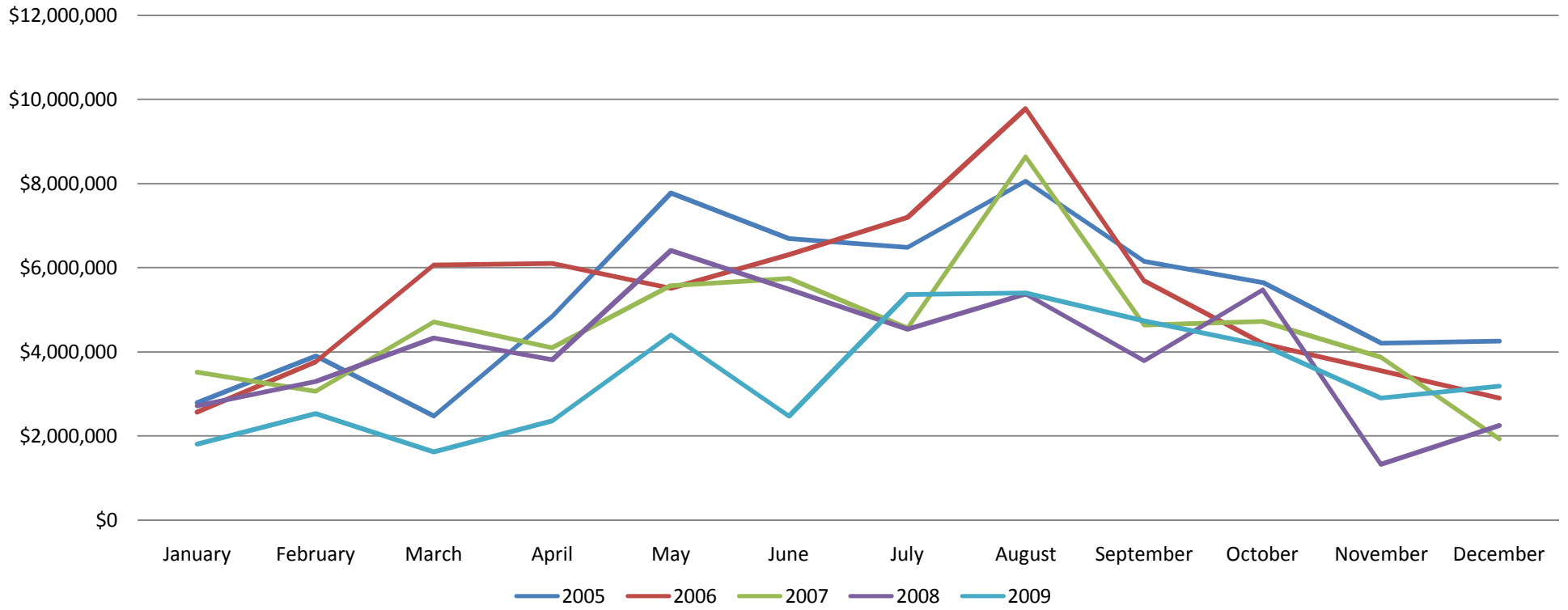
Logan County

WRIST Inc. Housing Statistics

Total Sold Volume By Month

	January	February	March	April	May	June	July	August	September	October	November	December
2005	\$2,793,375	\$3,896,000	\$2,471,392	\$4,848,610	\$7,780,395	\$6,688,441	\$6,479,650	\$8,060,075	\$6,150,165	\$5,651,250	\$4,212,700	\$4,256,160
2006	\$2,569,410	\$3,767,630	\$6,061,423	\$6,102,620	\$5,511,607	\$6,311,878	\$7,200,833	\$9,786,519	\$5,685,730	\$4,195,525	\$3,551,800	\$2,901,200
2007	\$3,524,350	\$3,069,960	\$4,720,600	\$4,100,387	\$5,577,786	\$5,751,425	\$4,572,059	\$8,645,900	\$4,647,700	\$4,727,590	\$3,878,400	\$1,935,600
2008	\$2,725,041	\$3,300,050	\$4,330,200	\$3,809,590	\$6,412,070	\$5,492,250	\$4,545,480	\$5,383,050	\$3,790,300	\$5,473,552	\$1,328,000	\$2,250,500
2009	\$1,817,675	\$2,539,000	\$1,627,149	\$2,360,200	\$4,404,050	\$2,477,049	\$5,362,350	\$5,405,303	\$4,740,650	\$4,165,350	\$2,904,030	\$3,189,150

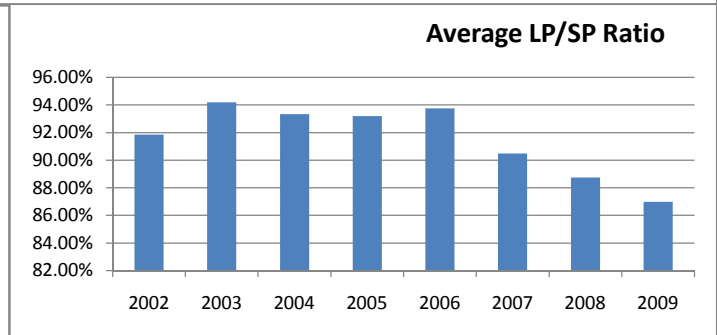
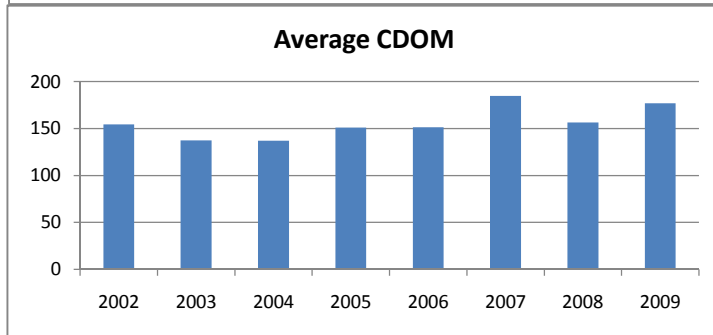
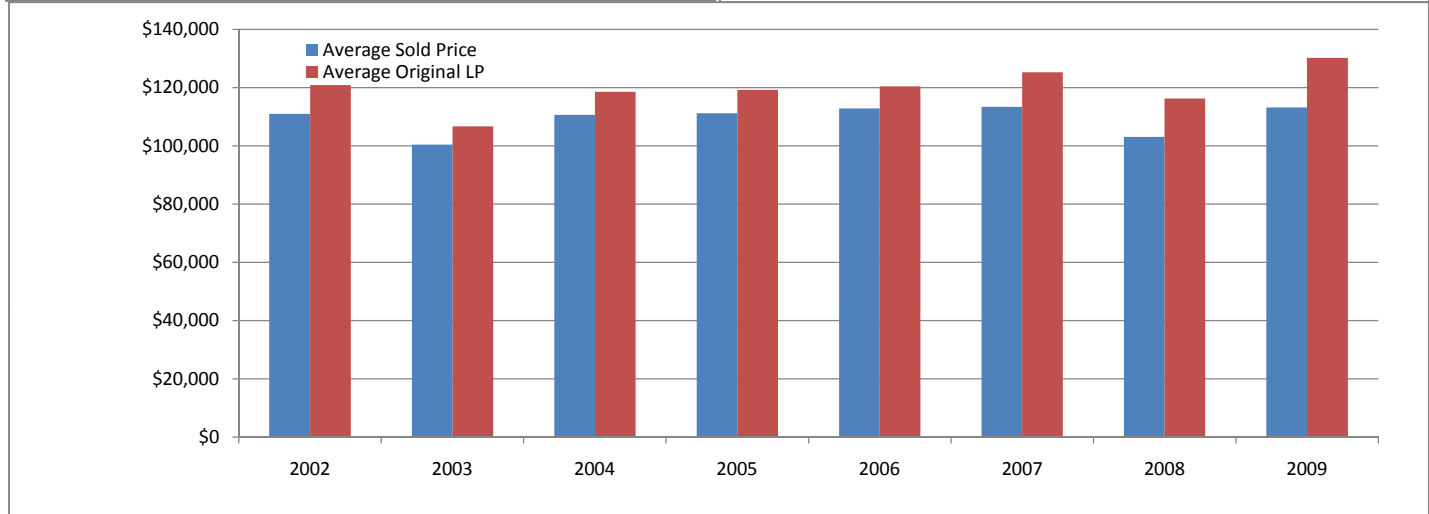
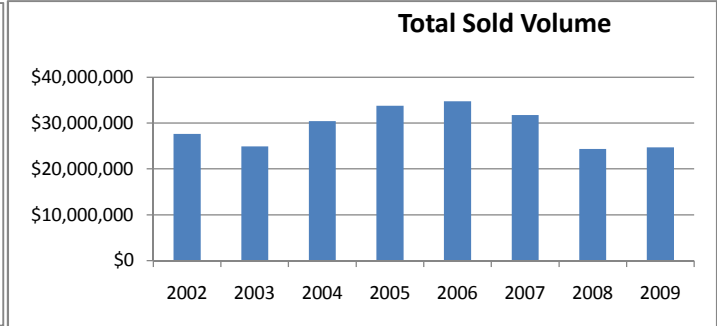
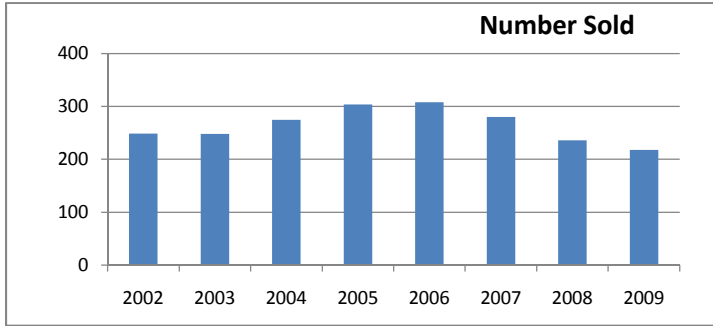
Total Sold Volume By Month



Mercer County

WRIST Inc. Housing Statistics

	2002	2003	2004	2005	2006	2007	2008	2009
Number Sold	249	248	275	304	308	280	236	218
Average Sold Price	\$111,017	\$100,473	\$110,703	\$111,173	\$112,897	\$113,353	\$103,126	\$113,232
Total Sold Volume	\$27,643,191	\$24,917,339	\$30,443,403	\$33,796,638	\$34,772,292	\$31,738,773	\$24,337,670	\$24,684,468
Average CDOM	154	137	137	151	151	185	156	177
Average Original LP	\$120,873	\$106,668	\$118,599	\$119,284	\$120,434	\$125,283	\$116,217	\$130,183
Average LP/SP Ratio	91.85%	94.19%	93.34%	93.20%	93.74%	90.48%	88.74%	86.98%

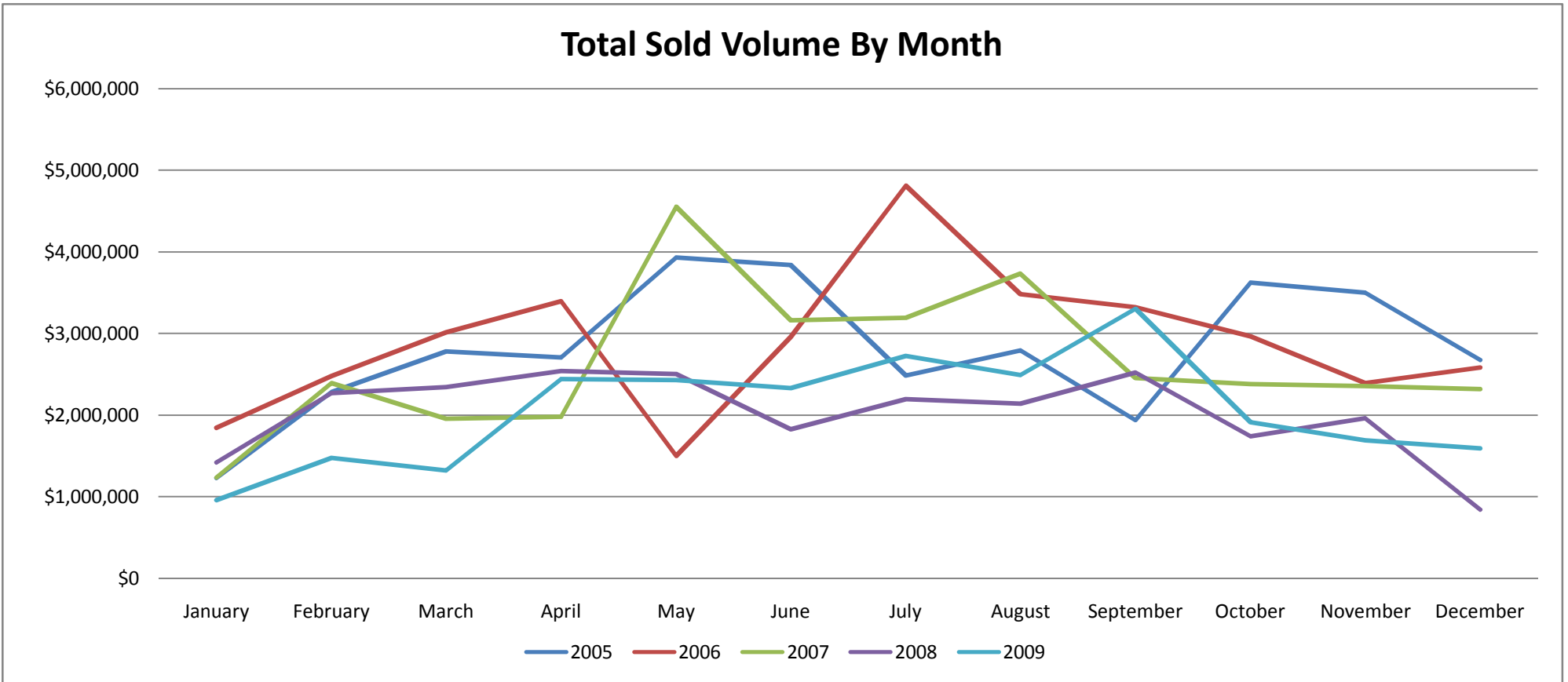


Mercer County

WRIST Inc. Housing Statistics

Total Sold Volume By Month

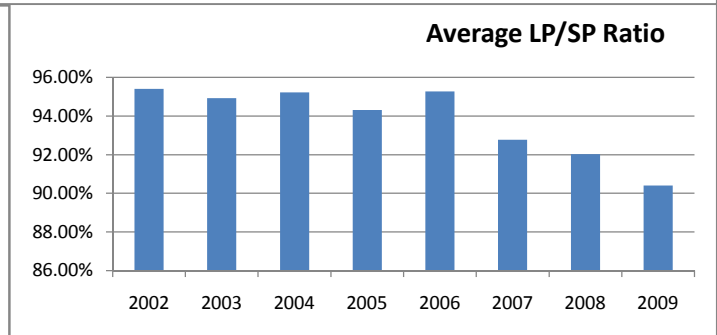
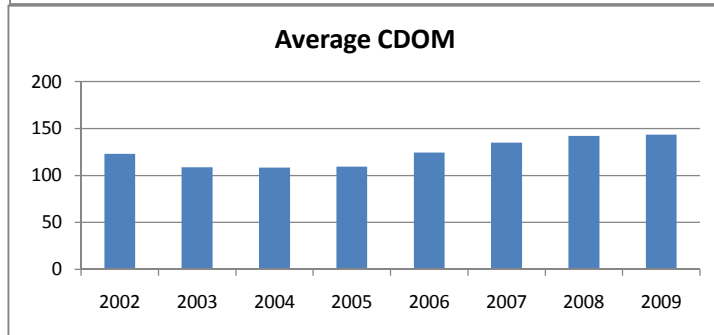
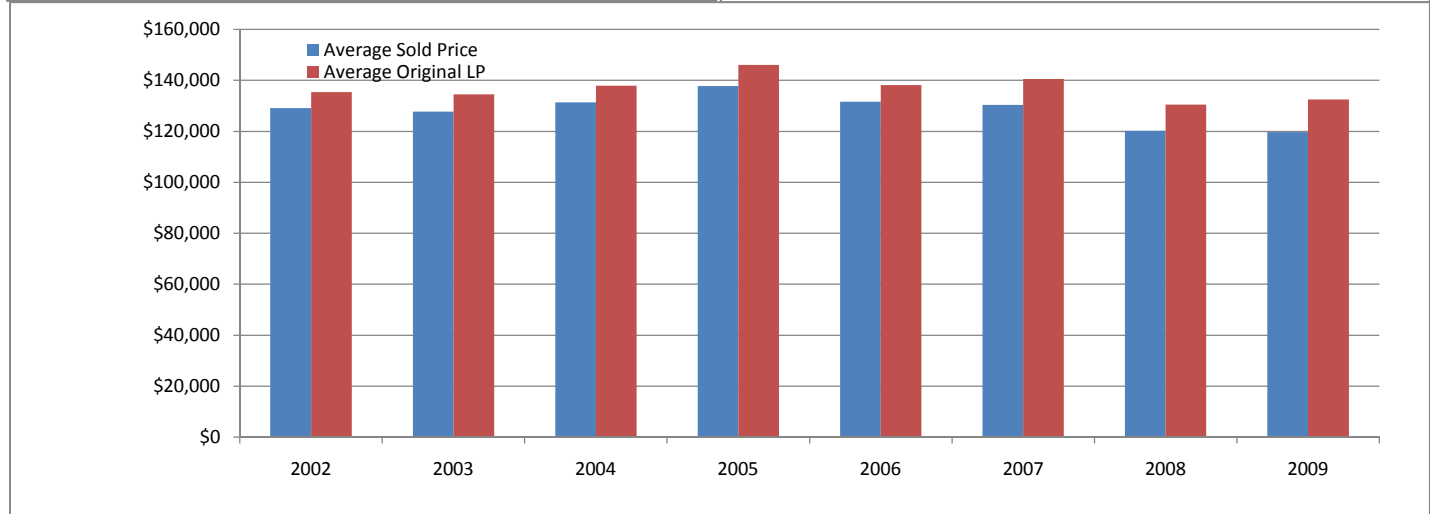
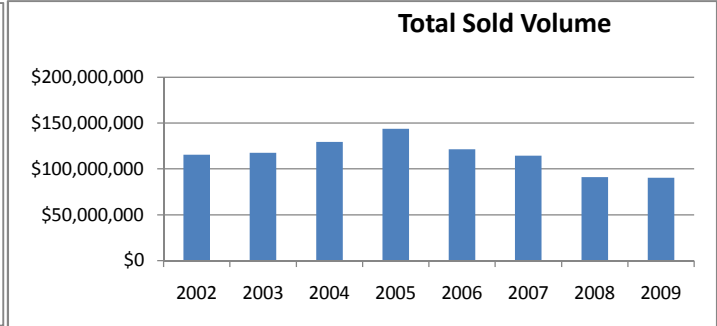
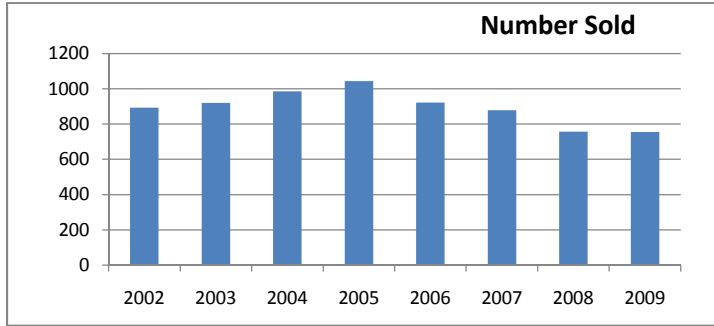
	January	February	March	April	May	June	July	August	September	October	November	December
2005	\$1,230,890	\$2,285,912	\$2,781,105	\$2,706,000	\$3,931,750	\$3,840,650	\$2,486,100	\$2,795,006	\$1,935,900	\$3,622,425	\$3,503,000	\$2,677,900
2006	\$1,846,300	\$2,479,600	\$3,017,760	\$3,398,549	\$1,504,300	\$2,963,092	\$4,811,318	\$3,481,403	\$3,322,725	\$2,964,370	\$2,393,900	\$2,588,975
2007	\$1,239,200	\$2,396,900	\$1,957,800	\$1,984,550	\$4,552,617	\$3,160,785	\$3,194,700	\$3,733,400	\$2,458,950	\$2,380,471	\$2,355,800	\$2,323,600
2008	\$1,422,980	\$2,271,300	\$2,344,500	\$2,543,750	\$2,508,675	\$1,830,500	\$2,201,340	\$2,140,200	\$2,527,725	\$1,741,600	\$1,963,700	\$841,400
2009	\$959,200	\$1,474,370	\$1,321,500	\$2,444,950	\$2,430,100	\$2,332,800	\$2,727,373	\$2,494,375	\$3,304,400	\$1,912,900	\$1,690,950	\$1,591,550



Miami County

WRIST Inc. Housing Statistics

	2002	2003	2004	2005	2006	2007	2008	2009
Number Sold	894	920	985	1043	922	878	757	756
Average Sold Price	\$129,121	\$127,724	\$131,315	\$137,775	\$131,614	\$130,336	\$120,132	\$119,746
Total Sold Volume	\$115,433,924	\$117,505,816	\$129,345,531	\$143,698,894	\$121,347,702	\$114,435,218	\$90,940,003	\$90,528,066
Average CDOM	123	109	108	110	124	135	142	144
Average Original LP	\$135,351	\$134,561	\$137,907	\$146,081	\$138,154	\$140,484	\$130,538	\$132,459
Average LP/SP Ratio	95.40%	94.92%	95.22%	94.31%	95.27%	92.78%	92.03%	90.40%



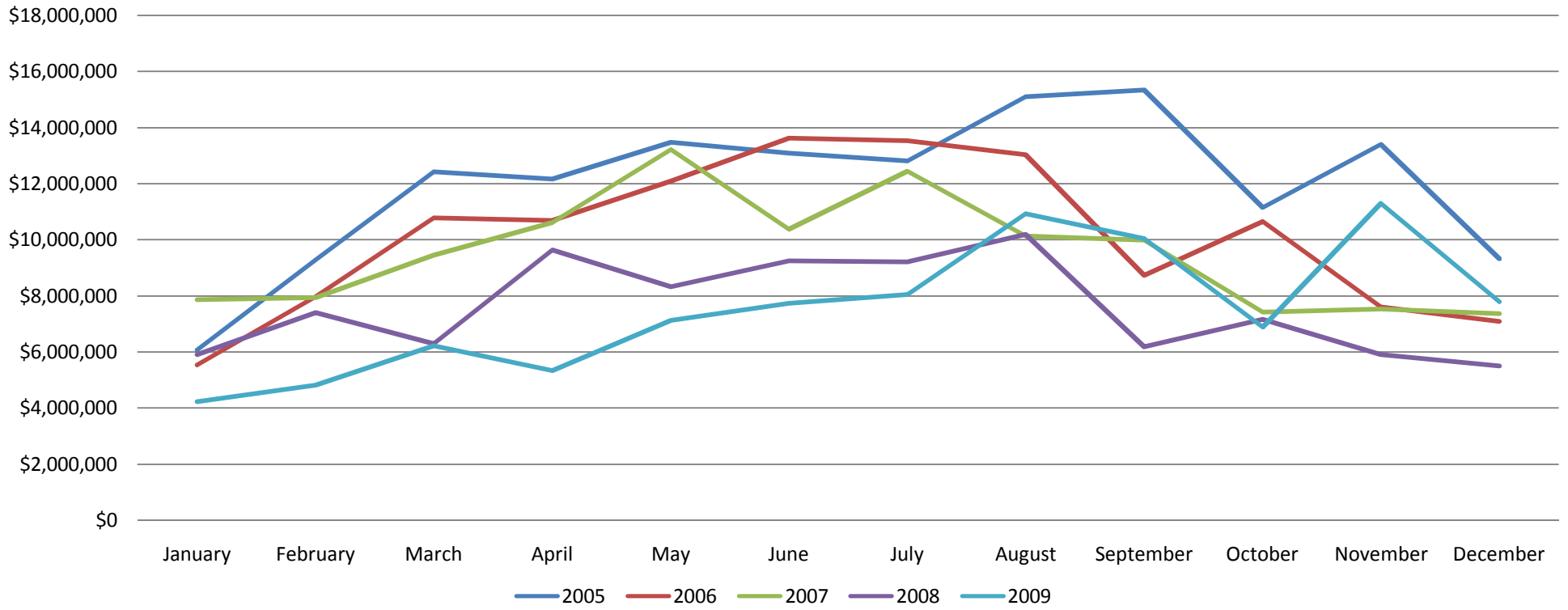
Miami County

WRIST Inc. Housing Statistics

Total Sold Volume By Month

	January	February	March	April	May	June	July	August	September	October	November	December
2005	\$6,079,350	\$9,295,100	\$12,427,881	\$12,174,674	\$13,486,897	\$13,091,048	\$12,811,751	\$15,105,540	\$15,343,381	\$11,147,100	\$13,401,277	\$9,334,895
2006	\$5,533,204	\$7,969,265	\$10,776,750	\$10,690,356	\$12,094,939	\$13,631,100	\$13,534,681	\$13,048,295	\$8,735,195	\$10,654,732	\$7,600,325	\$7,078,860
2007	\$7,882,783	\$7,942,140	\$9,452,125	\$10,618,900	\$13,219,708	\$10,389,610	\$12,438,615	\$10,143,745	\$9,986,261	\$7,432,505	\$7,551,646	\$7,377,180
2008	\$5,897,140	\$7,404,894	\$6,294,768	\$9,632,014	\$8,319,046	\$9,247,852	\$9,209,150	\$10,191,116	\$6,182,547	\$7,160,003	\$5,902,203	\$5,499,270
2009	\$4,231,206	\$4,820,463	\$6,223,050	\$5,347,271	\$7,132,427	\$7,745,400	\$8,057,410	\$10,935,919	\$10,049,928	\$6,896,462	\$11,300,941	\$7,787,589

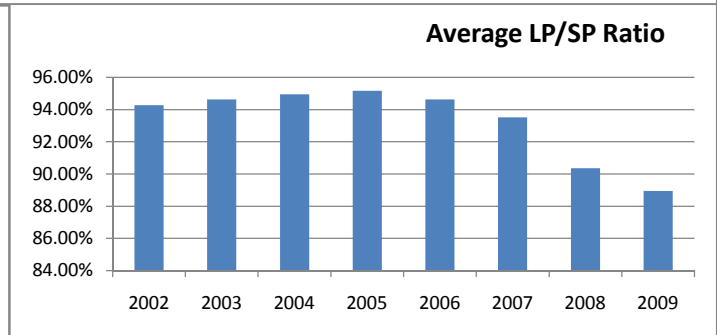
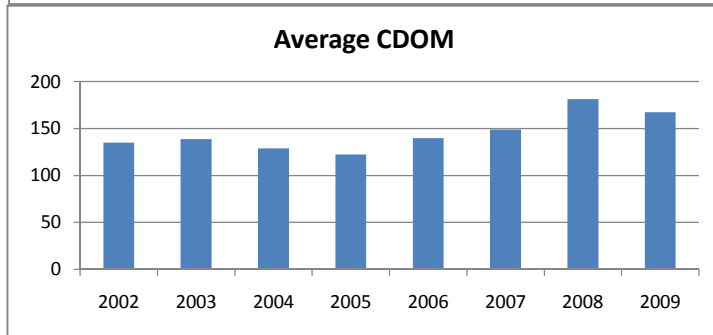
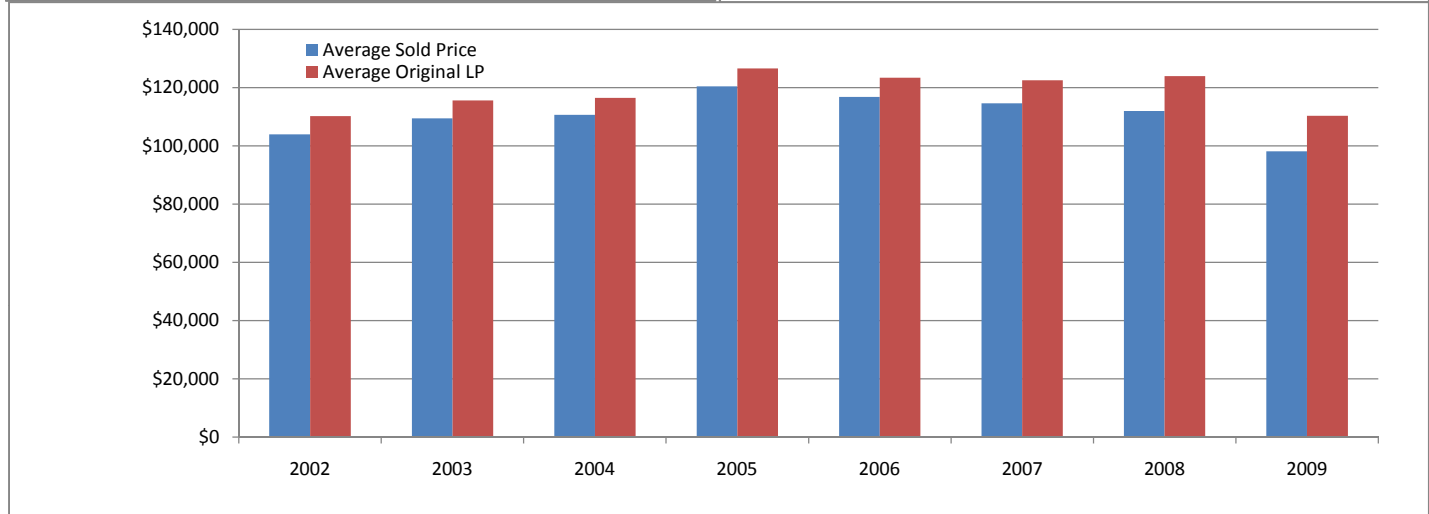
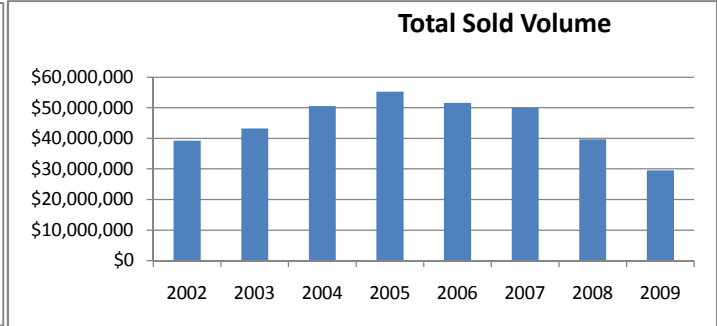
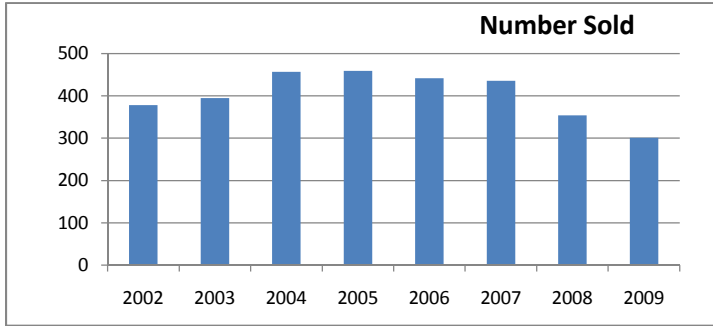
Total Sold Volume By Month



Shelby County

WRIST Inc. Housing Statistics

	2002	2003	2004	2005	2006	2007	2008	2009
Number Sold	378	395	457	459	442	436	354	301
Average Sold Price	\$103,942	\$109,412	\$110,646	\$120,446	\$116,793	\$114,603	\$112,007	\$98,136
Total Sold Volume	\$39,290,229	\$43,217,564	\$50,565,081	\$55,284,801	\$51,622,291	\$49,967,044	\$39,650,592	\$29,538,957
Average CDOM	135	139	129	122	140	149	181	167
Average Original LP	\$110,255	\$115,629	\$116,530	\$126,556	\$123,408	\$122,540	\$123,954	\$110,321
Average LP/SP Ratio	94.27%	94.62%	94.95%	95.17%	94.64%	93.52%	90.36%	88.96%



Shelby County

WRIST Inc. Housing Statistics

Total Sold Volume By Month

	January	February	March	April	May	June	July	August	September	October	November	December
2005	\$2,263,460	\$2,429,250	\$4,825,100	\$6,968,412	\$6,160,706	\$5,169,430	\$2,942,760	\$5,966,395	\$4,850,715	\$5,132,650	\$4,343,523	\$4,232,400
2006	\$2,698,550	\$4,177,015	\$5,260,800	\$5,603,260	\$3,346,650	\$4,612,951	\$4,609,050	\$3,487,550	\$4,237,660	\$5,083,980	\$5,942,675	\$2,562,150
2007	\$3,856,140	\$3,507,060	\$4,061,659	\$4,983,450	\$5,659,700	\$5,532,905	\$4,522,250	\$5,244,130	\$3,063,050	\$3,738,800	\$2,288,000	\$3,509,900
2008	\$3,061,350	\$2,573,475	\$2,418,100	\$3,061,775	\$5,069,250	\$3,264,252	\$4,026,090	\$5,730,630	\$3,484,250	\$2,659,550	\$1,926,700	\$2,375,170
2009	\$1,601,150	\$1,397,375	\$2,467,650	\$2,667,948	\$1,862,925	\$3,299,701	\$2,223,700	\$1,885,650	\$3,498,040	\$2,111,600	\$3,359,118	\$3,164,100

